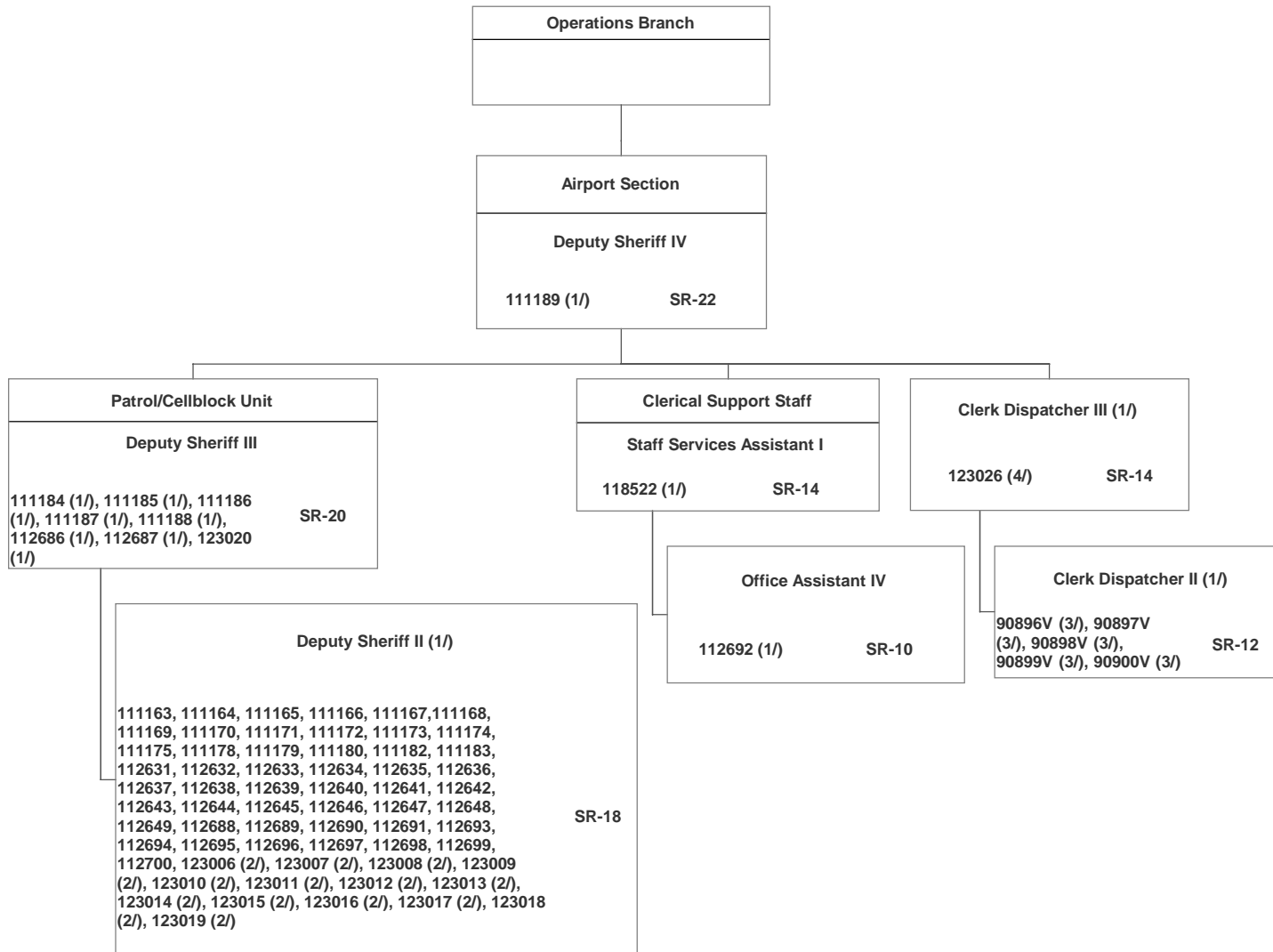


STATE OF HAWAII
DEPARTMENT OF PUBLIC SAFETY
OFFICE OF THE DEPUTY DIRECTOR FOR LAW ENFORCEMENT
SHERIFF DIVISION
OPERATIONS BRANCH
AIRPORT SECTION

POSITION ORGANIZATION CHART

June 30, 2020
Page 91



1/ Positions all funded by Inter-Departmental Transfer from DOT-Airports.
2/Act 5, SLH 2019, positions effective 7.1.2019, Deputy Sheriff II: 123006, 123007, 123008, 123009, 123010, 123011, 123012, 123013, 123014, 123015, 123016, 123017, 123018, 123019, Deputy Sheriff III, position 123020.
3/ Act 5, SLH 2019, positions effective 7.1.2019, Clerk Dispatcher II: 90896V, 90897V, 90898V, 90899V, 90900V,
4/ Act 5, SLH 2019 provided Clerk Dispatcher II, position 90901V, SR-12. This position was then established as a Clerk Dispatcher III, position 123026, SR-14, effective 1.31.2020.