

Future of Hawaii's Community Correctional Centers

Volume 5 – New Housing Units Planned at KCCC, MCCC, and HCCC

April 2019

Hawaii Department of Public Safety

The Hawaii Department of Public Safety (PSD) is responsible for carrying out judgments of the state courts whenever a period of confinement is ordered. Its mission is to uphold justice and public safety by providing correctional and law enforcement services to Hawaii's communities with professionalism, integrity and fairness. Currently, approximately 5,400 offenders are housed within State of Hawaii jail and prison facilities located within Hawaii, at the Federal Detention Center in Honolulu, and in private contractor facilities on the mainland.

PSD operates Community Correctional Centers (CCCs) on the islands of Kauai, Maui, Hawaii and Oahu. Each CCC provides the customary county jail function of housing short-term felons, offenders on probation, and misdemeanor offenders with a sentence of one year or less, pretrial detainees (felonies and misdemeanors), offenders from other jurisdictions, and probation violators. CCC's also provide an important pre-release preparation/transition function for prison system inmates who are transferred back to their county of origin when they reach less than a year until their scheduled release.



Kauai, Maui, and Hawaii CCC Crowding Persists

With increasingly aged and overcrowded in-state jail and prison facilities, PSD is moving forward with a program to improve and/or replace its corrections infrastructure. For example, planning for a new facility to replace the Oahu Community Correctional Center (OCCC) and expansion of the Women's Community Correctional Center (WCCC) has been underway since 2016 with considerable progress already accomplished. (Information about OCCC and WCCC can be found on the PSD-OCCC Future Plans website: <http://dps.hawaii.gov/occc-future-plans/>.)

In addition to replacing OCCC and expanding WCCC, PSD is seeking to alleviate the overcrowding that exists at the Kauai Community Correctional Center (KCCC), the Maui Community Correctional Center (MCCC), and the Hawaii Community Correctional Center (HCCC) in order to provide safe, secure, and humane environments for the care and custody of adult male and female offenders originating from Kauai, Maui and Hawaii counties. Assisting PSD is the Hawaii Department of Accounting and General Services (DAGS).

PSD is proposing to alleviate the persistent and significant crowded conditions by developing a medium security housing unit at each facility for inmates who are currently housed at KCCC, MCCC and HCCC. The improvements proposed for KCCC, MCCC and HCCC are representative of PSD's overall program of upgrading Hawaii's community correctional centers. The medium security housing units are intended to provide new beds in appropriate settings to address the current crowded conditions; provision of such housing is not intended to increase the inmate population at the facilities beyond their current number. Instead, inmates housed in cramped conditions and in spaces not well suited for inmates, would be accommodated in housing units designed and constructed to State of Hawaii and national standards.

Housing Unit Project Goals

Staff, Community, and Longevity are correctional facilities' major goals common throughout the islands. These goals will ultimately help achieve the overall wellness of each of the facilities for inmates and staff alike. Staff at each facility are the driving force that keeps operations moving smoothly. Incorporating elements of the design to bring fulfillment, efficiency, satisfaction, professionalism, personal space and enhancing the rich culture will allow the staff to feel pride in their facilities. Community and culture are extremely important as well. The facilities are intended to restore members of the community needing help before they return to the community. The facilities will become Pu'uhonua (refuge) and allow offenders to rehabilitate and revive themselves so they can integrate back into the community.

Longevity will allow the facilities to continue to be a resource. Sustainability and durability are crucial for these facilities to be a trusted, dependable support system for the communities within which they are located.

Staff, Community, and Longevity emerged as principles that drive the decision-making process for the housing projects. To achieve these goals, it will be necessary to develop housing units that provide safety and security, efficiency, and sustainability. Safety in a jail facility comes in many levels. Staff occupy the building daily and need to feel safe at all times. Dealing with volatile and complicated situations puts employees in risky situations. The safety of the staff results from measures such as increasing security in operations, having clear lines of sight, having state-of-the-art security systems and procedures, clearly identifying staff areas, creating personal space, increasing natural daylight, and establishing a secure perimeter.

It's important that members of the community that live and work around the facilities feel safe. By creating a secure environment in and around the jails, it would be an unlikely place for unwanted people to loiter. Modern security measures and operations allow more control and direct supervision by the officers and more normative and calming physical environments assist in rehabilitation. In improving and providing adequate space for housing ensures people will have their own personal space and alleviate issues of overcrowding.

Draft EAs Nearing Completion

To bring commonality among the community correctional centers, a prototype medium security housing building would be designed to meet the needs at KCCC, MCCC and HCCC. Providing standardization of the various systems and facilities will also aid in maintenance. Subsequent design objectives for the housing unit would be to implement a direct supervision model to aid in the rehabilitation of inmates. Development of the medium security housing units will allow for inmates currently housed in inadequate conditions to be relocated to the new buildings.

Since the housing unit projects involve the use of State funds and State lands, each is subject to the State environmental review process. Over the past year, preparation of separate Draft Environmental Assessments (EAs) has been underway for KCCC, MCCC and HCCC pursuant to the requirements of Chapter 343, Hawaii Revised Statutes (HRS), and Chapter 200, Title 11, State of Hawaii Department of Health Administrative Rules (HAR), State Department of Health.

Once published, the Draft EAs, the assessments in each, and the procedures by which environmental investigations are conducted and incorporated in decision-making, are parts of a process established by Hawaii's environmental impact statement law (HRS 343) to ensure that the environmental consequences of state actions, such as developing medium security housing units at Hawaii's neighbor island jail facilities, are considered. The process is designed to ensure that public officials make decisions based on an understanding of the environmental impacts of proposed actions and take appropriate steps to "protect, restore and enhance the environment."

New Housing Unit Concepts Developed

Detailed designs for the new housing units have not yet emerged but will be developed in later stages of the planning and development process. However, it can be stated that the new housing units will look nothing like the existing facilities. In fact, the units will bear little resemblance to most of the images we think of when contemplating a jail or detention facility.

The PSD team has been developing concepts for the planned housing units which will be markedly different in appearance from the current facilities. Today, new correctional facility designs conform more to the community, using building materials, design features, and a color palette that reflect local surroundings as evidence by the renderings that follow.

KCCC Housing Unit



CURRENT CONDITION



CONCEPTUAL EXTERIOR APPEARANCE

MCCC Housing Unit

CURRENT CONDITION



CONCEPTUAL EXTERIOR APPEARANCE



HCCC Housing Unit

CURRENT CONDITION

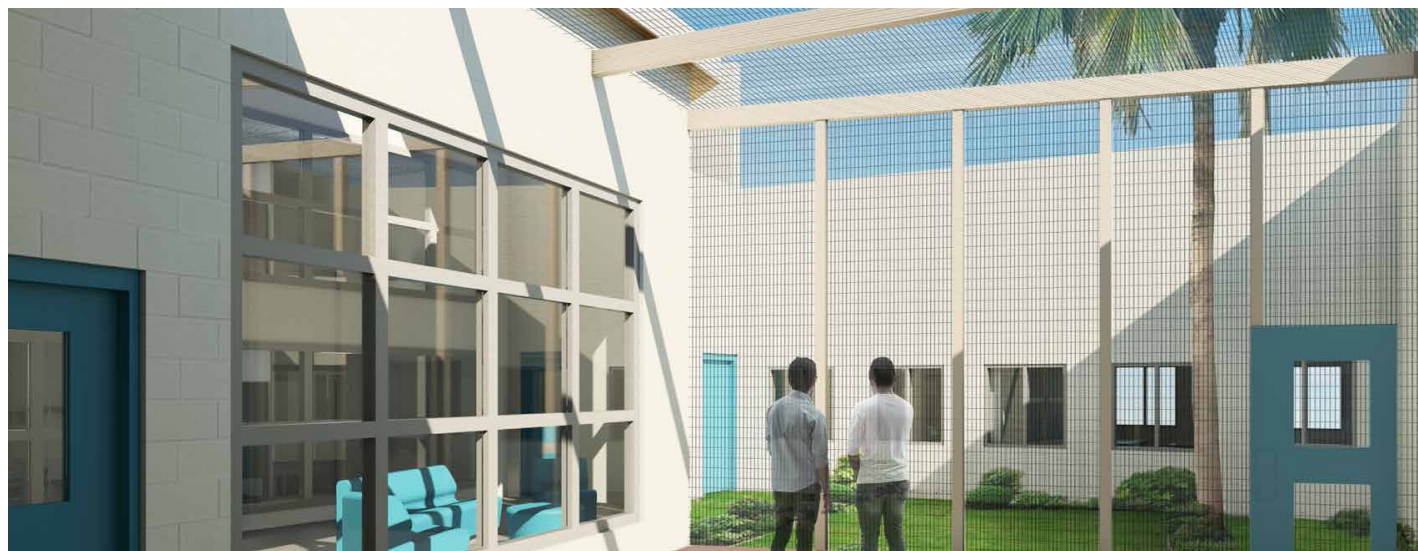


CONCEPTUAL EXTERIOR APPEARANCE



Conceptual Interior Appearance of New Housing Units

Although plans for the housing units are only at the concept stage, they will be similar in scale and appearance to a college dormitory or similar student accommodation with spaces devoted to inmate housing, common space/dayroom, and semi-outdoor spaces as shown in the following interior images.



Public Outreach Continues

Since March 2018, PSD and DAGS have undertaken a public outreach effort to provide information about the housing projects, describe the planning and decision-making process, and provide the public with the means to participate in the process. Outreach activities to date have varied to encourage participation across different audiences, recognizing that individuals and groups receive and process information in different ways. One approach to increase awareness of the housing problems and solicit the input and assistance of state and local elected and appointed officials and government agencies was for PSD to reach out to such individuals and agencies in early 2018 to inform them of plans to alleviate crowding at the three CCCs. Letters sent in 2018 by PSD Director Nolan Espinda introduced the team responsible for the planning and environmental impact studies and, again in 2019, to provide an update on progress and status of the effort.

Information prepared in support of housing projects has also been made available through the Neighbor Island Jail Projects website: <https://dps.hawaii.gov/neighbor-island-jails-project/>. The website hosts team member contact information, a calendar of events, technical reports, the history of public outreach activities during 2018 and 2019, project newsletters, and a means to contact the team with questions or comments. Interested persons and organizations are continuously added to the Neighbor Island Jail Projects emailing/distribution list to receive periodic information about the projects and to learn about progress in the planning process.

PSD and DAGS produced and widely distributed periodic newsletters concerning various aspects of the planning and environmental impact study process for the KCCC, MCCC, and HCCC housing units. Newsletters were prepared in response to the need for accurate information about jail function, operation, inmate populations, and related characteristics. These publications were used as meeting handouts, made available via PSD's Neighbor Island Jail Projects website, and distributed via an email system to over 500 individuals, organizations, agencies, stakeholders, elected and appointed officials, and others throughout Hawaii. In addition, PSD and DAGS prepared a Pre-Assessment Consultations document (July 30, 2018) to explain the need for the housing units and to seek advice and input on issues that should be addressed in the Draft EAs.

Throughout the past year, PSD officials considered correspondence and other indications of interest or concern on the part of the public regarding the proposed actions. Federal, state, and local officials, regulatory agencies, and others were also consulted throughout preparation of the Draft EAs. PSD and DAGS are committed to ensuring that the process of planning, programming, assessing potential environmental impacts and eventually permitting, designing, and constructing the housing units is open and transparent and benefits from the input and involvement of all interested parties. The outreach effort will continue through the end of the planning phase.





Upcoming Activities

KCCC, MCCC, and HCCC planning is moving forward with these activities occurring in the months ahead.

<p>April 2019</p>	<p>Draft Environmental Assessments for KCCC, MCCC and HCCC completed and submitted to OEQC.</p> <p>Publish Newsletter Vol. 5.</p> <p>Look to PSD/Neighbor Island Jail Projects website for project-related documents, announcements, and upcoming activities.</p>
<p>May 2019</p>	<p>Draft Environmental Assessments for KCCC, MCCC and HCCC available.</p> <p>60-day comment period on Draft Environmental Assessments for KCCC, MCCC and HCCC begins.</p> <p>Publish Newsletter Vol. 6.</p> <p>Look to PSD/Neighbor Island Jail Projects website for Draft EAs and other project-related documents, announcements, and upcoming activities.</p>
<p>June 2019</p>	<p>60-day comment period on Draft Environmental Assessments for KCCC, MCCC and HCCC continues.</p> <p>Look to PSD/Neighbor Island Jail Projects website for Draft EAs and other project-related documents, announcements, and upcoming activities.</p>

Interested in Learning More?

For additional information visit <https://dps.hawaii.gov/neighbor-island-jails-project/> or contact:

Toni Schwartz, Public Information Officer

Hawaii Department of Public Safety
Tel: 808.587.1358
Email: Toni.E.Schwartz@hawaii.gov

Robert J. Nardi, Vice President

Louis Berger U.S.
Tel: 973.407.1681
Mobile: 973.809.7495
Email: rnardi@louisberger.com