

# Future of the Oahu Community Correctional Center

## Volume 12 - Conceptual Development Plans Revealed

June 2017

### Hawaii Department of Public Safety

The Hawaii Department of Public Safety (PSD) operates the Oahu Community Correctional Center (OCCC) which acts as the local detention center for the First Circuit Court. Located within an approximately 16-acre property at 2109 Kamehameha Highway in Honolulu, OCCC is currently the largest jail facility in the State of Hawaii. From its beginning in 1975 as a part of the county-based community corrections system concept with 456 beds, the facility has been expanded to its current design capacity of 628 beds and an operational capacity of 954 beds and consistently operates above these capacities.

OCCC provides the customary jail function of managing both pre-trial detainees and locally-sentenced misdemeanor offenders and others with a sentence of one year or less as well as providing a pre-release preparation/transition function for prison system inmates when they reach less than a year until their scheduled release. It's important to note that the inmates housed at OCCC are under the jurisdiction of the Judiciary (courts) and not PSD. Detainees in jail can only be released, placed in outside programs or assigned to other alternatives to incarceration by the Judiciary (courts).

With increasingly aged and obsolete correctional facilities, PSD is proposing to improve its corrections infrastructure through modernization of existing facilities and construction of new institutions to replace others. Among its priority projects is the replacement of OCCC which, when constructed, will take advantage of the newest cost-savings technologies and improve correctional services and safety for inmates, staff and the public.

### Conceptual Development Plans Prepared for Alternative OCCC Sites

The planning process has progressed to the point where an Interim Architectural Space Program has been prepared and four sites have risen to the top of the list as potential locations for the new OCCC facility. At this time, OCCC planners and architects have prepared four conceptual development plans to understand how each potential site could be used for construction of the new OCCC; how the new facility would need to vary in design and layout to accommodate the building itself, employee and visitor parking, and support structures; and what challenges would be faced at each location during later design and construction stages. This newsletter (Vol. 12) is devoted to understanding the unique features of each site and how facility development would need to respond to those features. Each conceptual plan addresses the need for a structure(s) to accommodate the unique housing and programming needs of both detention and pre-release inmates originating on Oahu.



Existing OCCC Facility



# New OCCC to Replace Existing Facility

## Detention Facility

Detention inmates housed in OCCC have been charged with a crime(s) and are going through the court (pretrial) process. This group also includes individuals who have been found guilty of a crime(s) and received a sentence of up to one year. Pre-release inmates are near the end of a lengthier sentence and are transitioning from prison back to the community.

The new OCCC would consist of a multi-custody secure facility for adult males who are either in pretrial status or sentenced to the facility. The facility is being planned with an operating capacity of approximately 959 male detainees (FY 2026) with approximately 67% comprising pretrial offenders and 33% comprising sentenced offenders. Because inmate housing is built in modules, the actual number of beds would be higher; current plans call for 1,044 new detention beds. Along with inmate housing, the new OCCC would include spaces for building administration and security, food preparation, medical services, program services, visitation, building systems and maintenance among others and would be sized and organized to meet American Correctional Association standards.

## Pre-Release Facility

Currently, pre-release male inmates are housed at the Laumaka Work Furlough Center (LWFC) and Module 20 at the existing OCCC which are partial confinement facilities comprising community corrections, day reporting and work furlough functions. LWFC contains 96 beds and is located approximately one block from OCCC in Kalihi while Module 20 has 120 beds and is located on the grounds of OCCC. Female offenders participate in these programs at the Women's Community Correctional Center (WCCC) where there are 44 pre-release beds available.

Contrary to the male detention population, which has experienced a slight decline in recent years, the pre-release population has been steadily increasing with approximately 300 male offenders ready for pre-release at any given time. It is projected that the number of inmates eligible for pre-release will increase to approximately 392 by FY 2026 and assuming the 96-bed LWFC remains operational, there will be a net future need of 296 pre-release beds for males. The State of Hawaii has a goal to divert as many pre-release inmates as possible from the new OCCC into community-based programs. However, until plans, providers, facilities, contractual arrangements and funding are put in place, all pre-release inmates must be housed within PSD-operated facilities.



Existing OCCC Facility



Laumaka Work Furlough Center



Existing OCCC Facility

Therefore, the plan to address the future housing needs of OCCC male pre-release inmates comprises these alternatives:

- Both detention and pre-release functions are included within OCCC development plans at each potential site.
- LWFC remains operational and while PSD intends to expand LWFC in the future, only the current 96 beds will be considered when planning to house the total of 392 pre-release beds needed in the future.
- The pre-release component of the proposed OCCC facility at each potential site would be sized to accommodate the total population anticipated in the 10-year inmate population forecast, minus the 96 existing LWFC beds, or 296 inmates. Because of the housing module layout, the actual planned number of pre-release beds at the new OCCC would total 336. However, if the new OCCC facility is built at the existing OCCC site in Kalihi, it will be responsible for the full population of 392 inmates. The actual planned bed count for this option is yet to be determined.

The total number of beds needed for detention and pre-release males in FY 2026 is approximately 1,255.

## Women's Community Correctional Center

Pretrial offenders, higher security female offenders, and female offenders eligible for Community Release on Oahu

are currently housed at OCCC. Although the number of male inmates on Oahu has experienced a decline in recent years, the number of female inmates has increased from 152 in FY 2013 to 181 in FY 2015 and is projected to rise to 243 by FY 2026. Approximately 75% would comprise pretrial offenders and 25% comprising sentenced offenders. An additional 38 females are forecasted to participate in pre-release with the total number of female beds needed by FY 2026 estimated to be 281.

Plans are to relocate female inmates from the existing OCCC to the WCCC located in Kailua. The purpose for relocating females from OCCC to WCCC is to provide greater access to rehabilitation programs and improve family visitation, although females would continue to receive intake services in the future at the new OCCC.

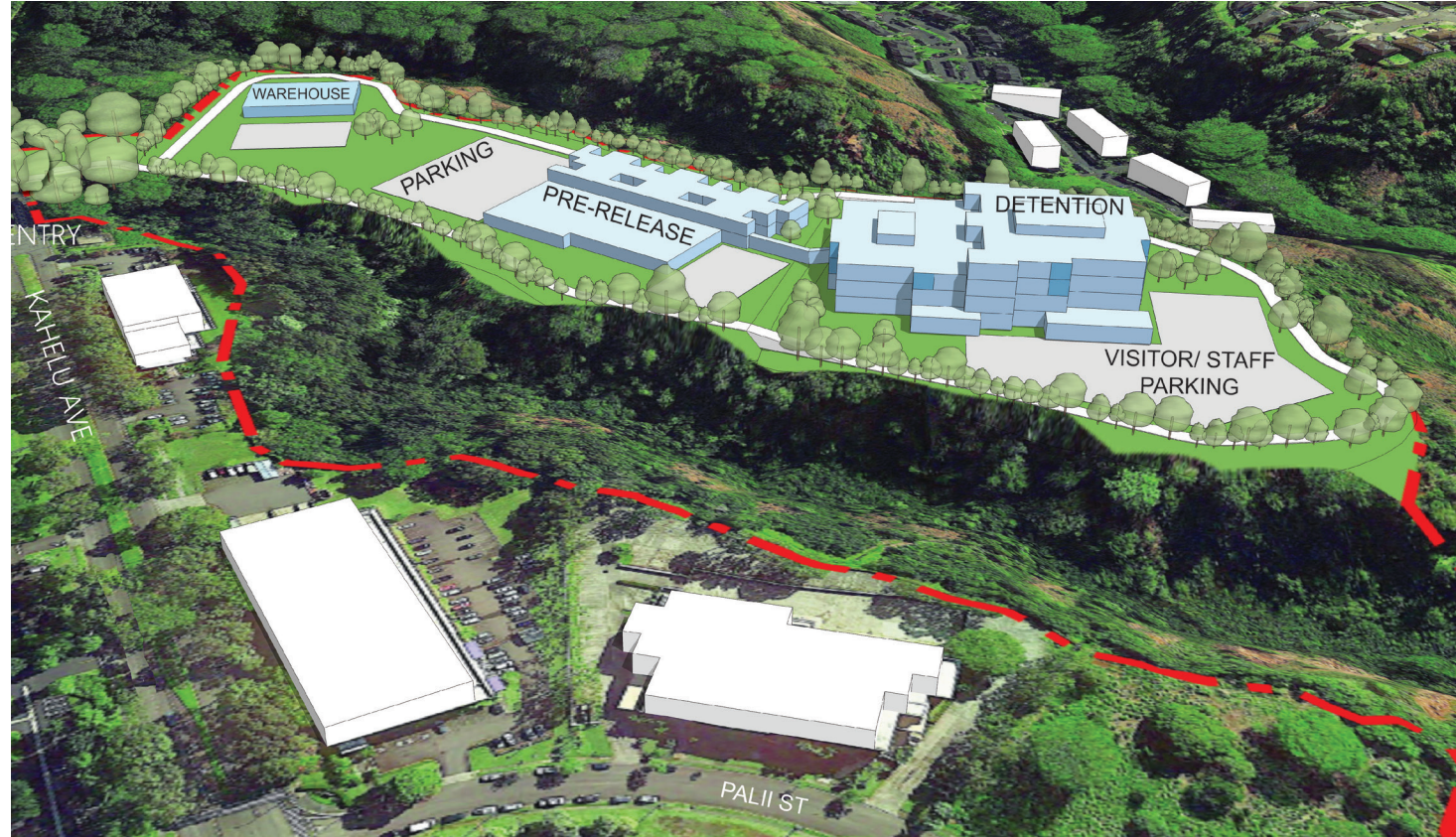




Possible OCCC Development Plan at the Animal Quarantine Facility Site

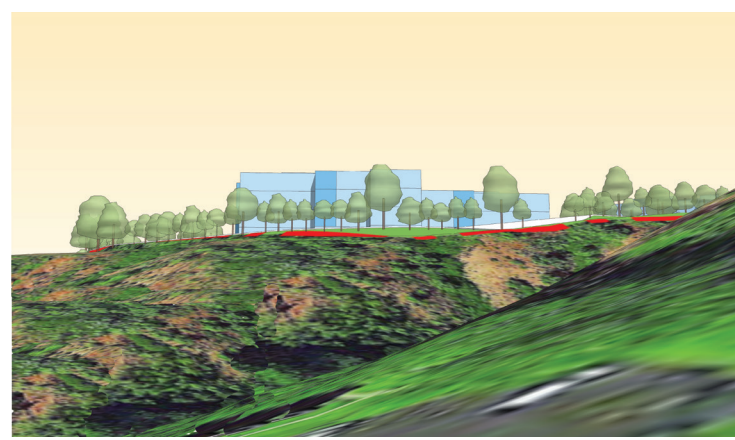


Possible OCCC Development Plan at the Mililani Technology Park Site



### Summary of Conditions

- All development can occur in a single construction phase
- Allows for separation of low-rise detention and pre-release facilities, at-grade parking
- Opportunities for future expansion
- Allows for multiple points of access
- Proximity to Halawa Correctional Facility with potential sharing of services and resources
- No conflicts with surrounding land uses
- Relatively level topography; few environmental resources or limitations
- Site owned by State of Hawaii
- Closer to services, program providers and courts than Halawa CF and Mililani Tech Park sites



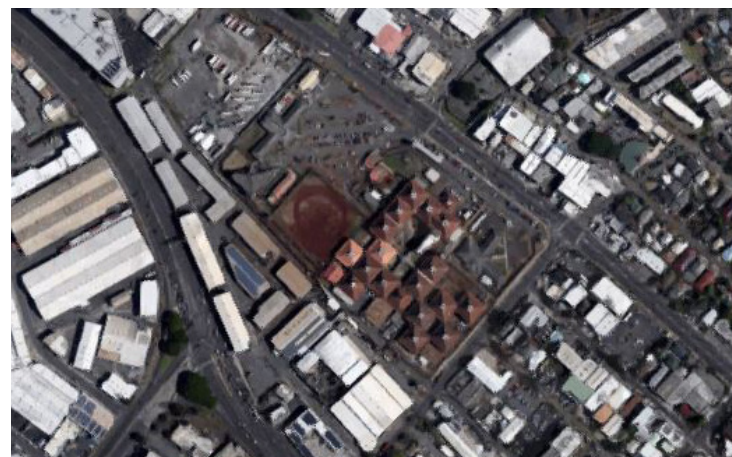
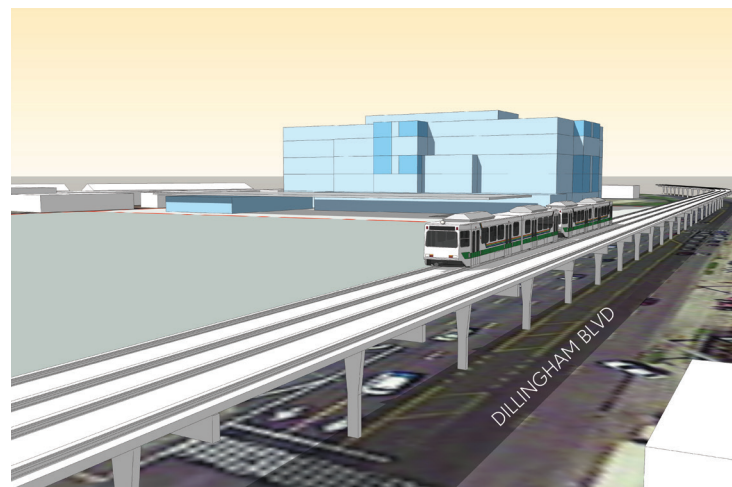
### Summary of Conditions

- All development can occur in a single construction phase
- Allows for separation of mid-rise detention and pre-release facilities, at-grade parking
- Opportunities for future expansion
- Located near residential neighborhoods
- Relatively level topography around proposed building footprint; few environmental resources or limitations
- Adjacent topography allows buildings to be largely screened from surrounding properties
- Furthest site from services, program providers and courts
- Sharing of services and resources with Halawa Correctional Facility unlikely
- Private ownership; land acquisition at market rate





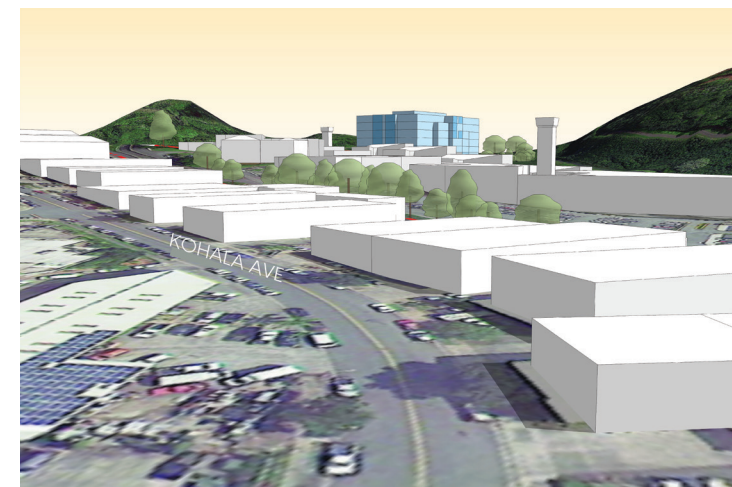
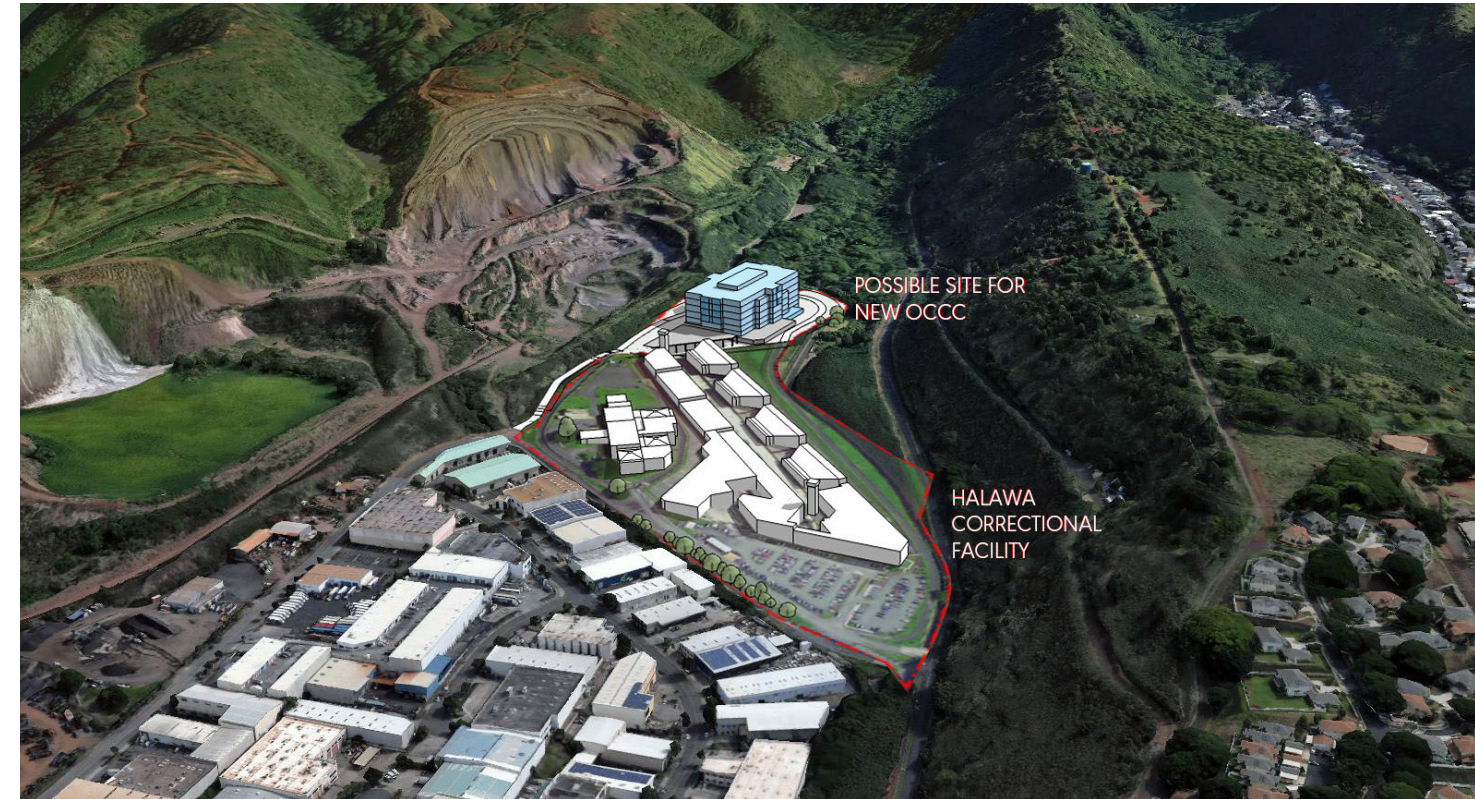
## Possible OCCC Development Plan at the OCCC Site



### Summary of Conditions

- Closest site to services, program providers and courts
- Level topography; few environmental resources or limitations
- Adjacency to planned rail offers expanded commuting options
- Requires detention and pre-release functions to be combined into one mid-rise facility, structured parking
- Complex and costly phased construction plan and schedule
- Additional construction challenges include temporary relocation of inmates, work areas for contractors, temporary parking for employees and visitors, etc.
- No opportunities for future expansion
- Sharing of services and resources with Halawa Correctional Facility unlikely
- High property valuation and transit-oriented development opportunities allow alternative site uses
- Site owned by State of Hawaii; occupied by Department of Public Safety

## Possible OCCC Development Plan at the Halawa Correctional Facility Site



### Summary of Conditions

- All development can occur in a single construction phase
- OCCC development precludes expansion of state prison; prison inmates remain housed in mainland facilities
- Co-location with Halawa Correctional Facility allows potential sharing of services and resources
- No conflicts with surrounding land uses
- Further from services, program providers and courts than OCCC and Animal Quarantine Facility sites
- No opportunities for future expansion
- Sloping topography; few environmental resources or limitations
- Requires detention and pre-release functions to be combined into single high-rise facility, structured parking
- Site owned by State of Hawaii; occupied by Department of Public Safety





Animal Quarantine Facility, an OCCC site alternative.

## Upcoming Activities

The OCCC planning process is moving forward with these activities in the months ahead:

<b>July 2017</b>	<p>Continue detailed studies of four alternative OCCC sites and WCCC via the Environmental Impact Statement process.</p> <p>Continue public outreach, education, and engagement process; look to the OCCC website for upcoming announcements, events and related activities.</p> <p>Publish OCCC Newsletter Vol. 13.</p>
<b>August 2017</b>	<p>Continue detailed studies of four alternative OCCC sites and WCCC via the Environmental Impact Statement process.</p> <p>Continue public outreach, education, and engagement process; look to the OCCC website for upcoming announcements, events and related activities.</p> <p>Publish OCCC Newsletter Vol. 14.</p>
<b>September 2017</b>	<p>Continue detailed studies of four alternative OCCC sites and WCCC via the Environmental Impact Statement process.</p> <p>Continue public outreach, education, and engagement process; look to the OCCC website for upcoming announcements, events and related activities.</p> <p>Publish OCCC Newsletter Vol. 15.</p>

## Interested in Learning More?

For additional information visit <http://dps.hawaii.gov/occc-future-plans> or contact:

### **Toni Schwartz, Public Information Officer**

Hawaii Department of Public Safety

Tel. 808.587.1358

Email: [Toni.E.Schwartz@hawaii.gov](mailto:Toni.E.Schwartz@hawaii.gov)

### **Robert J. Nardi, Principal Associate**

Louis Berger U.S.

Tel: 973.407.1681

Mobile: 973.809.7495

Email: [rnardi@louisberger.com](mailto:rnardi@louisberger.com)