



STATE OF HAWAII - KA MOKU'ĀINA 'O HAWAII
Department of Public Safety -
Ka 'Oihana Ho'opalekana Lehulehu

**CRIME VICTIM COMPENSATION
COMMISSION -
KE KOMIKINA UKU LAAHI KALAIMA**

Fifty-Second Annual Report
July 1, 2022 – June 30, 2023

Commissioners
Mari McCaig Bellinger, Chair
Clifton Y.S. Choy
Jo Kamae Byrne

Pamela Ferguson-Brey
Executive Director

Table of Contents

Executive Summary	1-3
Mission Statement	5
Overview and History	5-6
Annual Activity	7-26
Operations	7
Compensation in Action	8
Commission Projects	9-26
Medical Expense Reduction Project	9
Mass Violence and Terrorism Response Project	10-13
Restitution Recovery Project	14-18
Justice Reinvestment Initiative (JRI)	19-26
Restitution Workgroup	20-23
Victim Services Workgroup	23-26
CVCC-HPA Crime Victim Advocacy Project	25-26
Assessment and Collection of the Crime Victim Compensation Fee	28-30
Conclusion	31
Appendix A – FY2023 Case Summaries	A-1

Executive Summary

In 1967, the Hawai'i State Legislature created the Crime Victim Compensation Commission (the Commission) to mitigate the financial impact suffered by victims and survivors of violent crime. The Commission disburses funds to pay un-reimbursed expenses for crime-related losses experienced by victims who suffer physical or emotional injury, or death, as the result of a violent crime. Many victims of violent crime would not be able to receive rehabilitation services, counseling services, or bury a loved one without compensation awarded by the Commission.

In 1998, the Legislature created the Crime Victim Compensation Fee (the Compensation Fee) to act as a funding base so that the Commission could become fiscally self-sufficient. The Judiciary was tasked with assessing and collecting the Compensation Fee. Unfortunately, by 2022, the Commission was on the verge of closing due to Compensation Fee collection shortfalls over many years by the Judiciary together with the effects of the COVID-19 pandemic.

In FY 2022, the Legislature saved the Commission from closing by providing general funds for the Commission's staff positions. The Legislature left the Compensation Fee intact to fund compensation payments to victims of violent crime and survivors. The Compensation Fee is now the primary funding source for compensation payments made to victims of violent crime.

Based on the Judiciary's recent collection patterns, the Commission is concerned that, going forward, Compensation Fee collections will be insufficient to cover compensation payments for victims of violent crime. In FY 2023, the Judiciary collected only \$363,640 in Compensation Fees. The Judiciary's collection of over one million dollars in Compensation Fees (\$1,020,690 in FY 2008 and \$1,080,897 in FY 2009) demonstrates that offenders can pay the Compensation Fee if it is ordered.

A 2022 Hawai'i Supreme Court decision that precludes judges from considering an offender's future ability to pay the Compensation Fee will further reduce Compensation Fee collections by the Judiciary.

Maintaining a consistent and adequate source of non-tax revenue to fund compensation for crime victims continues to be an important fiscal issue facing the Commission. The Commission will continue to monitor and report to the Legislature on Compensation Fee collections by the Judiciary.

Commission Projects:

The **Medical Expense Reduction Project** seeks to reduce and contain escalating medical expenses by requesting that medical treatment providers accept a reduced payment from the Commission as payment in full for their medical services. Over the course of the Project, the Commission has saved victims and the Commission over \$2,900,000.

The **Mass Violence and Terrorism Response Project** (Mass Violence Project) is working to ensure that the Commission and other victim service providers are integrated into the County and State Emergency Response and Incident Command plans in order to provide timely crime victim assistance and compensation services for victims and survivors of mass violence incidents. The Commission continues to lead this effort to integrate victim services through the *Mass Violence Planning Workgroup* and by providing mass violence training opportunities.

In 2018, the Commission established the *Mass Violence Planning Workgroup*, an interdisciplinary network comprised of representatives from county, state, and federal victim service providers, first responders, non-governmental organizations (NGOs), and emergency management agencies. The workgroup has completed the Mass Violence Response Plan for Victim Services and the Memorandum of Understanding (MOU) on Mutual Aid Between County Prosecutors. This partnership is working to create a network of integrated services for victims, survivors, surviving family members, and communities impacted by mass violence.

The Commission has collaborated with the Department of Justice, Office for Victims of Crime, Training and Technical Assistance Center (OVCTTAC) and the National Mass Violence Victimization Resource Center (NMVVRC) of the Medical University of South Carolina, to conduct trainings to ensure a coordinated and victim-centered response to a mass violence incident.

These collaborations and ongoing trainings are critical pieces in preparing to respond to a mass violence/terrorism incident in support of mass violence/terrorism victims and the community.

The **Restitution Recovery Project** (the Restitution Project) began in 2003 to collect court-ordered restitution payments from inmates and parolees, and to disburse those funds to their crime victims, or to the Commission in cases where the Commission previously provided a compensation award to the crime victim. The Restitution Project has opened 11,777 restitution and compensation fee cases and collected \$6,823,329.79 to disburse to crime victims from January 1, 2003, through June 30, 2023.

As a result of the Restitution Project, more victims have received increased amounts of restitution payments from offenders, and the Commission has received more reimbursements through restitution for compensation previously paid on behalf of crime victims. These increased restitution payments support and enhance the victim's ability to recover, serve to hold the offender accountable to the victim of their crime, and assist the offender in developing a sense of self-respect by righting the wrongs the offender has committed.

In 2011, the Governor appointed the Commission to serve as a member of the **Justice Reinvestment Initiative (JRI) Working Group**. In 2012, the Hawai'i State Legislature passed the Justice Reinvestment Act (Act 139) that created the first comprehensive investment in victim services that has since become a national model.

The Commission serves as the Lead Co-Chair of two JRI implementation workgroups – the JRI Restitution Workgroup and the JRI Victim Services Workgroup.

The Commission applied for and was awarded a 2-year Victims of Crime Act (VOCA) Victim Assistance Grant from the Office for Victims of Crime (OVC) for the **CVCC-HPA Crime Victim Advocacy Project (CVAP)**. CVAP established a corrections-based program in partnership with HPA to provide direct victim services during the parole process. The Project supported victims of crime by providing assistance/follow up to restitution/compensation application, safety planning, education on victims' rights and community referrals. The grant funding was for the period from July 1, 2020, through June 30, 2022.

While grant funding to continue the Project was not renewed, the Project demonstrated the need for victim services during the post-conviction process. The Commission and PSD committed to continuing this Project and are working together on an initiative to create a joint post-conviction victim service program to ensure that victim needs, community safety, and offender accountability are in the forefront of operational practices in Hawai'i from the time an offender is incarcerated through their release into our community.

Mission Statement

“The Commission seeks to treat every crime victim and survivor with dignity and respect, acknowledging the tremendous impact that violent crime has upon crime victims and our society.”



Overview and History

The Hawai‘i State Legislature created the Commission in 1967 to compensate victims of violent crimes for their out-of-pocket expenses, losses, and pain and suffering resulting from the crime. The Commission was only the third organization of its kind in the country when it was established.

To be eligible for an award, a victim of a violent crime must report the crime to law enforcement without undue delay, apply to the Commission for compensation within eighteen (18) months after the date of the incident, and provide the Commission with documentation of their expenses and losses (i.e., medical bills, insurance statements, pay stubs, etc.) resulting from the crime.

The Commission has processed over 30,000 victim applications since 1984¹, and, since inception, has awarded over thirty-one million dollars (\$31,000,000), in addition to almost two million nine hundred thousand dollars (\$2,900,000) in medical expense savings, in compensation to crime victims. These awards have assisted victims with medical costs, counseling costs, lost wages, and funeral expenses not covered by other sources. Many victims would not be able to receive rehabilitation services, counseling services, or bury a loved one without compensation awarded by the Commission.

In 1998, the legislature created the Crime Victim Compensation Fee² to act as the funding base for the Commission’s crime victim compensation program. The Judiciary was tasked with assessing and collecting the Compensation Fee.

During the implementation period of Compensation Fee collections, the Commission continued to rely primarily on State general funds to finance compensation awards and cover operating costs. In 2003, the Commission’s compensation program became fiscally self-sufficient.

Unfortunately, Compensation Fee collection shortfalls by the Judiciary over many years effectively deprived the Commission of the funding reserve it needed to survive. These funding shortfalls so limited the Commission’s funding reserve that the Commission was in danger of closing.

¹ Statistical data for the number of applications received by the Commission prior to 1984 is unavailable.

² HRS 351-62.6 Compensation Fee. (a) The court shall impose a compensation fee upon every defendant who has been convicted or who has entered a plea under section 853-1 and who is or will be able to pay the compensation fee. The amount of the compensation fee shall be commensurate with the seriousness of the offense as follows: (1) Not less than \$105 nor more than \$505 for a felony; \$55 for a misdemeanor; and (3) \$30 for a petty misdemeanor.

In FY 2022, the legislature saved the Commission from closure by providing general funds for the Commission's staff positions. The legislature left the Compensation Fee intact to fund compensation payments to violent crime victim and survivors. The continued reductions in collections jeopardize the Commission's ability to provide compensation awards to victims of violent crime.

Annual Activity

Operations

During FY 2023, the Commission received 457 new applications for compensation and processed 669 compensation awards. The Commission gives each application full consideration and works to ensure accurate and efficient claims processing.

Administrative Fees:

The Commission paid \$24,440.00 for the annual 5% central service expense fee for FY 2023 and \$27,027.00 to the Department of Budget & Finance for the Commission's pro-rata share of administrative expenses incurred by PSD based on all non-tax revenue collected on, or on behalf of, the Commission. These assessments are paid on all income sources except for money received from the Federal VOCA funds. The payment of these assessments pose a challenge to the Commission's ability to maintain fiscal self-sufficiency.

“I wanted to thank you so much for all of your help. How hard you worked to help make it possible to get my son...taken care of. There was so little time but you helped so much in making everything work out so that we could all be part of spreading his ashes. Thank you so much.”

Parents of a murder victim

These assessments are imposed on money collected to reimburse the Commission. When the Commission compensates a crime victim, the Commission can seek reimbursement from the defendant who committed the crime via court ordered restitution.³ However, when the Commission is paid the restitution, the Commission must pay the two assessments again. Thus, the Commission receives less than what it paid the crime victim even when the restitution is paid in full.

³ Section 706-646(2), Hawai'i Revised Statutes, provides, in part, that “the court shall order restitution to be paid to the crime victim compensation commission in the event that the victim has been given an award for compensation under chapter 351.”

Compensation in Action - Compensation for Crime-Related Expenses

Case #1 – Murder Victim

The 32-year-old male Victim was stabbed by a male suspect and died as a result of his wounds. His death was classified as Murder. The Commission awarded the statutory maximum of \$10,000.00 which consisted of \$1,618.00 for funeral expenses and \$8,382.00 for the Victim's three minor children to cover the loss of his supporting income.

Case #2 – Assault Victim

The 22-year-old male Victim was assaulted by several males. The Victim suffered substantial injuries and did not have medical insurance. The Commission negotiated with medical providers to accept \$16,766.12 as payment in full to satisfy medical expenses owed totaling \$135,445.24.

Case #3 – Abuse of Family/Household Member Victim

The 49-year-old female Victim was assaulted by her boyfriend. The Victim suffered a deviated septum, fractured teeth, and multiple contusions and incurred \$1,440.28 in medical and dental co-payments. The Commission was able to pay all of the co-payments directly to the providers so the Victim would not have to pay her expenses out of pocket.

Case #4 – Sexual Assault of a Minor Victim

The 6-year-old male Victim was sexually assaulted by a male relative. The Victim suffered emotional and physical trauma. The Commission has currently paid \$240.00 in co-payments for mental health treatment. The Victim is still under the care of a mental health treatment provider and the Commission will continue to award compensation for these services.

Case #5 – Attempted Murder Victim

The 23-year-old female Victim was stabbed multiple times by a male suspect. The Victim suffered serious injuries that are likely to result in permanent nerve damage. The Victim did not have medical insurance. The Commission negotiated with her medical providers to accept \$16,025.17 as payment in full to satisfy \$110,269.52 in medical expenses.

Case #6 – Assault Victim Restitution Recovery

The 14-year-old male Victim was assaulted by another minor male. Victim suffered a broken jaw and emotional trauma. He incurred \$389.95 in medical and therapy co-payments. The Commission was able to pay the therapy expenses directly to the therapist so that the Victim's parents did not have to pay his expenses out of pocket. With the assistance of prosecutors and victim witness advocates, the Commission requested, and the court ordered, that the defendant be held accountable for his actions and pay restitution to reimburse the Commission. Within four months of the restitution being ordered, the Commission received payment in full.

Commission Projects

Medical Expense Reduction Project

The Commission initiated the Medical Expense Reduction Project in FY 2006 to reduce overall medical expenses of uninsured victims of violent crime. Escalating medical costs have continued to further tax the Commission's already limited resources. This is especially evident in cases where the victim's medical expenses are not covered by medical insurance. In an attempt to mitigate rising medical costs, the Medical Expense Reduction Project has proven to be a success and will allow the Commission to continue providing much-needed financial assistance to the victims of violent crimes in Hawai'i.



Compensation for crime-related medical expenses is limited under Section 351-62(b), Hawai'i Revised Statutes, to a maximum of \$20,000.00 in cases involving compensable medical expenses for catastrophic injuries. This limit is easily exceeded when a violent crime victim is hospitalized for more than several days. Many crime victims who are uninsured fall into the gap group who make too little money to afford medical insurance, and too much money to qualify for Quest medical insurance.

The Commission has taken a two-pronged approach to this issue:

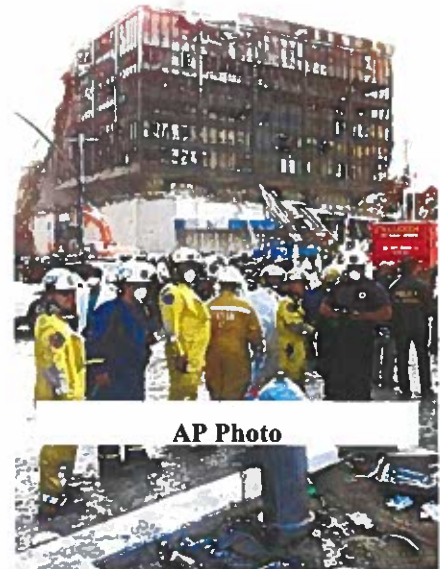
1. Medical Expenses Do Not Exceed the \$20,000.00 Statutory Limit
The Commission requests that medical treatment providers agree to accept 70% payment from the Commission as payment in full for their services for uninsured crime victims. In this way, the crime victim is not responsible for the remaining 30% of the expenses, and the Commission retains more funds to benefit other crime victims.
2. Medical Expenses Exceed the \$20,000 Statutory Limit
The Commission leverages the \$20,000 maximum award against the full amount of the medical expenses owed by the crime victim by requesting that the medical providers accept the Commission's payment as payment in full. This has enabled the Commission to leverage the \$20,000 maximum award available for compensable medical expenses to benefit the crime victim by not having any remaining balance due.

While not all medical providers in the cases selected for the Medical Expense Reduction Project agreed to accept a reduced payment as payment in full, in the Medical Expense Reduction Project cases where the Commission was successful in FY 2023, crime victims realized savings of \$50,839.44 from medical bills of \$96,151.47 in the aggregate, a savings of almost fifty-three percent (53%).

Over the course of the Project, the Commission has saved victims and the Commission almost \$2,900,000.

Mass Violence and Terrorism Response Project

Incidents of mass violence and terrorism are on the rise across the nation and Hawai'i is not exempt. Mass violence incidents require a specialized response to address the complex and unique needs of mass violence crime victims and traumatized communities. Agencies with specialized training are needed to coordinate effective and timely responses, providing information and assistance to victims of crime, in conjunction with other support agencies and victim service organizations. Access to supplemental federal crime victim compensation and assistance funds can be made available to assist in acts of domestic terrorism or mass criminal violence.



The Commission's Mass Violence and Terrorism Response Project has been working to ensure that Hawai'i's mass violence response integrates the needs of victims, survivors, and the community into State and County Emergency response plans and incident command systems. The manner in which victims and families are treated and supported during a mass violence incident has a tremendous impact on their ability to recover in the short- and long-term.

The Commission plays an important role in providing direct assistance to victims and survivors by providing compensation for:

- Victims directly injured in the incident (Medical/Mental Health Expenses);
- Persons not injured but engaged in business/education activities at the site of the mass violence incident (Mental Health Expenses only);
- Witnesses to the incident (Mental Health expenses only);
- Relatives of a deceased victim (Mental Health and Funeral Expenses only).

The Commission also coordinates the development of partnerships between state, federal, and local victim service providers, first responders, and emergency management agencies. The Commission's efforts in establishing victim services in Mass Violence/Terrorism response has been aided by technical assistance from the Department of Justice OVCTTAC, and consultation and coordination with the National Mass Violence Victimization Resource Center (NMMVRC) based at the Medical University of South Carolina (MUSC) who have helped to establish several mass violence response efforts, including:

- a) The Mass Violence Planning Workgroup;
- b) The Mass Violence Crime Victim Response Plan;
- c) A Memorandum of Understanding (MOU) on Mutual Aid Between County Prosecutors
- d) Acknowledgement in the Hawai'i Emergency Management's Emergency Support Function (ESF) 6 - Mass Care Response
- e) Annual Statewide Trainings to Plan, Prepare, and Respond to Mass Violence Incidents

Mass Violence Planning Workgroup

The Commission established a Mass Violence Planning Workgroup to ensure that complex and unique needs of victims, survivors, and the community are incorporated into the state's Mass Violence/Terrorism response. The Workgroup helps to identify and maximize available community resources and address any resource gaps by coordinating among its members.

In FY 2019, the Commission received a grant from the Department of the Attorney General's Crime Prevention and Justice Assistance Division (AG-CPJAD) to facilitate meetings of the Mass Violence Planning Workgroup. This grant facilitated monthly meetings with county, state, and federal victim assistance programs to develop guidelines and protocols for a coordinated response to mass violence incidents.

The Workgroup includes representatives from all four county victim witness units, federal victim service specialists from the FBI and the U.S. Attorney's Office; representatives from state and federal Homeland Security, county and state emergency management, the medical examiner, and various non-profit and community organizations.

Mass Violence Crime Victim Response Plan

In 2017, the Commission partnered with OVCTTAC to draft language for Hawai'i's *Mass Violence Crime Victim Response Plan (Crime Victim Response Plan)*. The Crime Victim Response Plan was developed in consultation with over 60 stakeholders comprised of government, non-profit, community, corporate, and faith-based organizations to address the complex and unique needs of victims, survivors, and communities impacted by a mass violence/terrorism incident.

The Crime Victim Response Plan was finalized in 2019 and recognized by the Department of Justice OVCTTAC and placed on their website to assist other states in developing their own state plans.

The Commission continues to update its mass violence procedures, improve interagency coordination, and develop inter-office protocols that reflect the language in the Crime Victim Response Plan. For example, the Commission designed a short-form application specifically for mass violence/terrorism incidents and translated it into the twelve (12) most common languages in Hawai'i. The Mass Violence applications are available through the Commission's website and are updated for each specific incident. The Commission continues to collaborate with the County Prosecuting Attorneys' Victim Assistance Programs to develop protocols so that the victim service providers can mobilize quickly if an incident occurs anywhere within the state.

The Commission continually updates the Crime Victim Response Plan to incorporate best practices learned from Mass Violence/Terrorism incidents that occur in other states.

Memorandum of Understanding on Mutual Aid

Prosecution-based Victim Witness Assistance Programs provide critical assistance through crisis intervention and support to victims, survivors, and the community to address the short- and long-term impact of the incident.

The Commission worked with the county prosecutors to create a MOU for mutual aid in the event that a mass violence/terrorism incident overwhelms the resources of a Victim Witness Assistance Program.

The MOU strengthens the partnership between the counties by outlining each county's mutual aid commitment to victim assistance in incidents of mass violence/terrorism throughout the state.

Emergency Support Function (ESF) 6 – Mass Care Response to Mass Violence Incidents Statewide Training on Mass Violence Incidents

The Commission worked with Hawai'i Emergency Management in drafting language for inclusion in the Emergency Support Function (ESF) 6 Annex that acknowledges the role of crime victim service providers during a mass violence incident.

The Commission continues to work with Hawai'i Emergency Management to ensure protocols are updated and language is included in the plan that differentiates mass violence/terrorism from other disasters, and acknowledges the unique needs of crime victims and the specialized services available to them.

Mass Violence Response Internal Protocols

The Commission has completed a draft of its Mass Violence Internal Protocols (Internal Protocols) to serve as a guide for the Commission staff when responding to a mass violence incident. The protocols:

- Provide a detailed description of the Commission's roles and responsibilities during an MVI;
- Identify the roles, responsibilities, and expectations of staff and volunteers, both in-office and in the field, regarding financial compensation and victim advocacy; and
- Include policies and procedures for updating, maintaining, and testing protocols, including mandatory training and tabletop exercises.

The Internal Protocols also include procedures for vetting, training, and notifying volunteers who will accompany Commission staff during an MVI.

Mass Violence Volunteer Program

The Commission is developing a Volunteer Program so that the Commission is able to meet the needs of crime victims in the immediate aftermath of a MVI. The Commission's Mass Violence Team is developing volunteer program protocols which include policies and procedures that

describe response procedures, alerts and notifications, and the roles and responsibilities of volunteers, including required training and participation in exercises.

Annual Statewide Trainings – Planning, Preparing, and Training to Respond to Mass Violence Incidents

The Commission has collaborated with the Department of Justice, Office for Victims of Crime, Training and Technical Assistance Center (OVCTTAC) and the National Mass Violence Victimization Resource Center (NMVVRC) of the Medical University of South Carolina to conduct trainings to ensure a coordinated and victim-centered response to a mass violence incident.

These collaborations and ongoing trainings are critical pieces in preparing to respond to a mass violence/terrorism incident in support of mass violence/terrorism victims and the community.

Department of Justice, Office for Victims of Crime, Training and Technical Assistance Center:
In FY 2019, the Commission received technical assistance from OVCTTAC to conduct two trainings: 1) *Responding to Victims/Survivors of Mass Violence and Terrorism* training for statewide responders and victim service providers; and 2) *The Mass Violence Response Training for Hawaii’s County Prosecutors*.

The Commission, in conjunction with the OVCTTAC Consultant, hosted a two-day statewide training, *Responding to Victims/Survivors of Mass Violence and Terrorism*, in September 2021. The training included a refresher course and review of the Mass Violence Response Plan. The training ended with tabletop exercises where groups prepared, planned, and responded to small- and large-scale mass violence incidents.

National Mass Violence Victimization Resource Center, Medical University of South Carolina:

In February 2023, the Commission partnered with the National Mass Violence Victimization Resource Center of the Medical University of South Carolina, to present a two-day statewide training entitled, *Behavioral Health Response to*

“As a responder to the Lahaina Maui Fires, the knowledge gained from the trainers [Behavioral Health Response to Mass Violence Incidents Training] gave the team and I the confidence and skills needed to respond effectively to our Maui community. Our agency continues to work on plans to strengthen the response to disasters, both natural and during a mass violence

Mass Violence Incidents. The Training was conducted on both O’ahu and Hawai’i Island. Around 200 representatives from the behavioral health, victim service provider, first responder, and emergency management communities were trained to recognize and understand the specific trauma that results from a mass violence incident and apply effective responses such as Psychological First Aid and other best practice strategies. The training encouraged participating agencies to develop response plans that integrate effective behavioral health preparedness in the event of a mass violence incident.

Restitution Recovery Project



“...in the criminal justice system, the victim of crime is almost always neglected. By requiring the convicted person to make restitution and reparation to the victim, justice is served. In so doing, the criminal repays not only “society” but the persons injured in the criminal’s act. There is a dual benefit to this concept: the victim is repaid for his loss and the criminal may develop a degree of self-respect and pride in knowing that he or she righted the wrong committed.”

Sen. Stand. Comm. Rep. No 789, in 1975 Senate Journal @ 1132, commentary on the Senate’s intent in passing HRS section 706-605(1)(e) which authorizes Courts to order restitution.

Section 706-605(1)(e), Hawai‘i Revised Statutes, was enacted in 1975 to provide the Courts with specific statutory authority to order defendants to make restitution payments to reimburse the economic losses suffered by the victims of their crime. Since the passage of this provision, a significant number of victims have not received the court-ordered restitution that they are entitled to. Victims have found it particularly difficult to recover court-ordered restitution from sentenced felony⁴ inmates and parolees.

The Judiciary previously processed restitution payments for all offenders, including inmates and parolees. For a decade, the Judiciary made efforts to divest itself of the responsibility for processing restitution payments made by inmates and parolees. During this time period, the Judiciary and PSD had been at an administrative stalemate over who was responsible for processing restitution payments made by inmates and parolees.

The system to process court-ordered restitution payments was not working. In order to open a restitution account for an inmate or parolee, the Judiciary required the name and address of the crime victim before they would accept any restitution payments. This procedure created a significant barrier to the payment of restitution by inmates and parolees. In many cases it was difficult or impossible for PSD and HPA to secure the name and address of the crime victim. Victim service providers were understandably uncomfortable about giving the names and addresses of domestic abuse, sexual assault, and other crime victims to PSD and HPA. There were concerns that victim safety would be jeopardized if an inmate or parolee inadvertently saw the name and address of their crime victim in their case file.

Despite numerous meetings between the Judiciary, PSD, HPA, and victim service providers, and several false starts, efforts to resolve this issue ultimately failed until the Commission stepped forward. With the support of the PSD Director, HPA, and the Honolulu Victim Witness Kokua Program, the Commission initiated a pilot project to collect and disburse restitution paid by inmates and parolees.

⁴ Excludes inmates sentenced to incarceration as a condition of probation.

On January 1, 2003, the Commission initiated the pilot Restitution Project to collect and disburse restitution paid by inmates and parolees. The Commission has opened 11,777 restitution and

“Because of the collaborative efforts between the Crime Victim Compensation Commission and the Hawai‘i Paroling Authority, there are more timely payments of restitution to crime victims than there have been in the past.”

Former Administrator, Hawai‘i Paroling Authority

compensation fee cases and collected over \$6,800,000.00 to disburse to crime victims from January 1, 2003 through June 30, 2023. Information identifying the whereabouts of crime victims is kept confidential so that the safety needs of victims are being met. The barriers that made it difficult for PSD and HPA to open restitution accounts at

the Judiciary have also been eliminated. PSD and HPA need only send restitution payments to the Commission and the Commission disburses the restitution to the victim.

A functional Restitution Project benefits all involved. It is now easy for Parole Officers to increase the accountability of offenders by having them repay the crime victim they injured. This Project also assists the County Victim Witness Programs in their efforts to restore the crime victims they serve. In cases where the Commission previously provided compensation awards to crime victims for medical, mental health, or funeral costs, the Commission receives direct reimbursement of those funds, allowing more crime victims to receive assistance.⁵

“Restitution is the cornerstone of restorative justice. Saying we are committed to restorative justice means nothing unless we make a sincere and concerted effort to make sure victims get restitution - without that - restorative justice means nothing. If an offender is not serious about paying restitution, they are not serious about rehabilitating themselves.”

Dennis Dunn, Former Director, Victim Witness Kokua Program, Department of the Prosecuting Attorney, City and County of Honolulu

Restitution Collection

Overall Restitution Collections

After a multi-year decline in collections due to the COVID-19 pandemic, restitution payments from inmates and parolees rebounded in FY 2023 to a total of \$566,930.60. This amount represents a 68% increase from FY 2022 and is an all-time annual high since the start of JRI restitution collections in FY 2012. More than 15,000 restitution case payments were received from inmates and parolees in FY 2023 as restitution collections increased across all segments of the post-conviction process, including from PSD statutory deductions, PSD furlough collections, and HPA parole collections.

⁵ Section 706-646(2), Hawai‘i Revised Statutes, provides, in part, that “the court shall order restitution to be paid to the crime victim compensation commission in the event that the victim has been given an award for compensation under chapter 351.”

The overall amount of restitution collected from inmates and parolees from the start of the JRI Restitution Accountability Project in FY 2012 through the close of FY 2023 totaled \$5.32 million. The Commission continues to collaborate with PSD and HPA to regularly review restitution data to analyze trends, identify gaps in collections, and develop solutions and improvements where needed.

PSD Restitution Collections

At the close of FY 2023, the total amount of statutory restitution deductions remitted to the Commission from inmate trust accounts totaled \$217,752.73, a 34% increase from FY 2022 and an all-time annual high for inmate deductions received since the start of JRI.

In December 2022, the Commission became aware that not all court-ordered restitution was being deducted in cases where inmate deposits were submitted through PSD's new online GTL Kiosk system. The new software interface that transfers funds to inmate accounts did not automatically process the restitution deductions required by law. As a result, PSD facility staff were required to manually process restitution deductions from daily inmate deposits. This issue was brought to the attention of PSD leadership and IT staff have developed and implemented an automated solution. Commission staff continue to work closely with PSD's VOCA-funded Restitution and Victim Services Project (PSD-RAVS) to ensure that all inmate restitution orders are properly identified and enforced by the correctional facilities, and that all restitution collections are remitted timely and accurately to the Commission for distribution to crime victims.

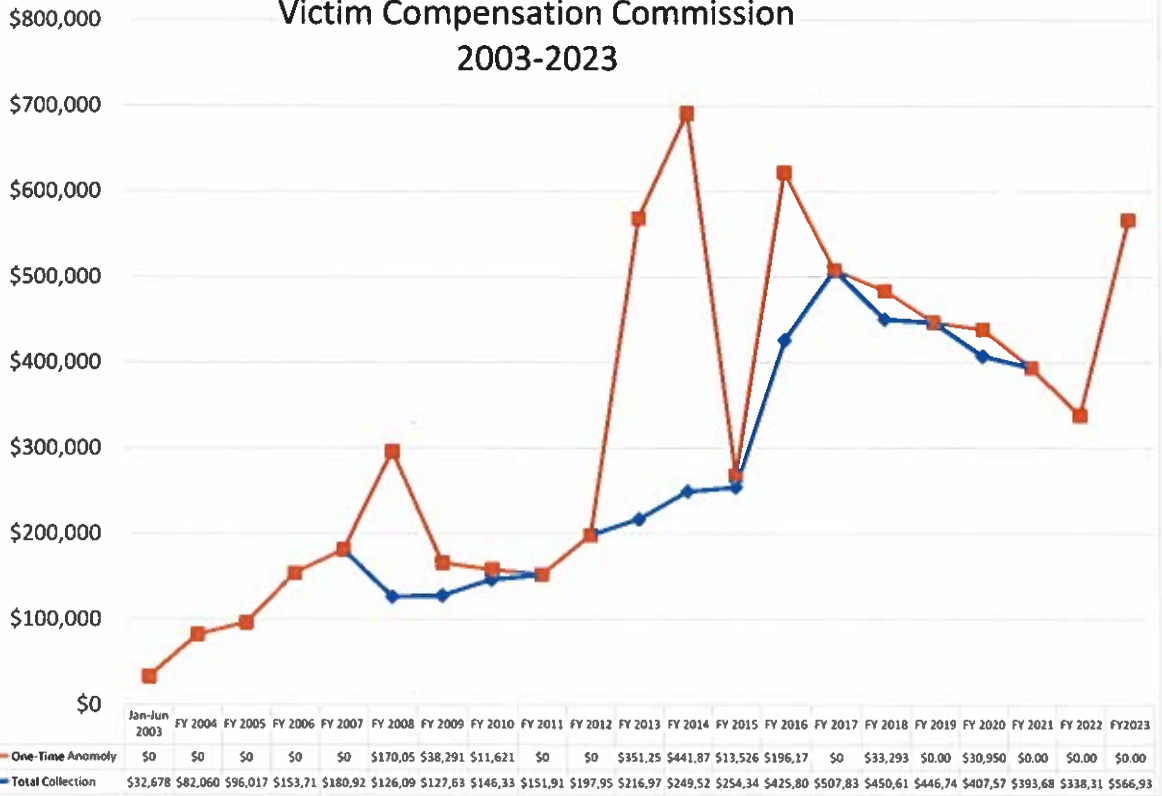
Furlough Collections

While restitution collections from inmate furlough earnings decreased significantly during the COVID-19 pandemic due to the closure of PSD's work furlough programs, collections rebounded after the programs reopened statewide in FY 2023 and the overall amount of restitution collected from furlough inmates reached \$109,409.41 in FY 2023 – a 96% return to pre-pandemic levels.

Parole Restitution Collections

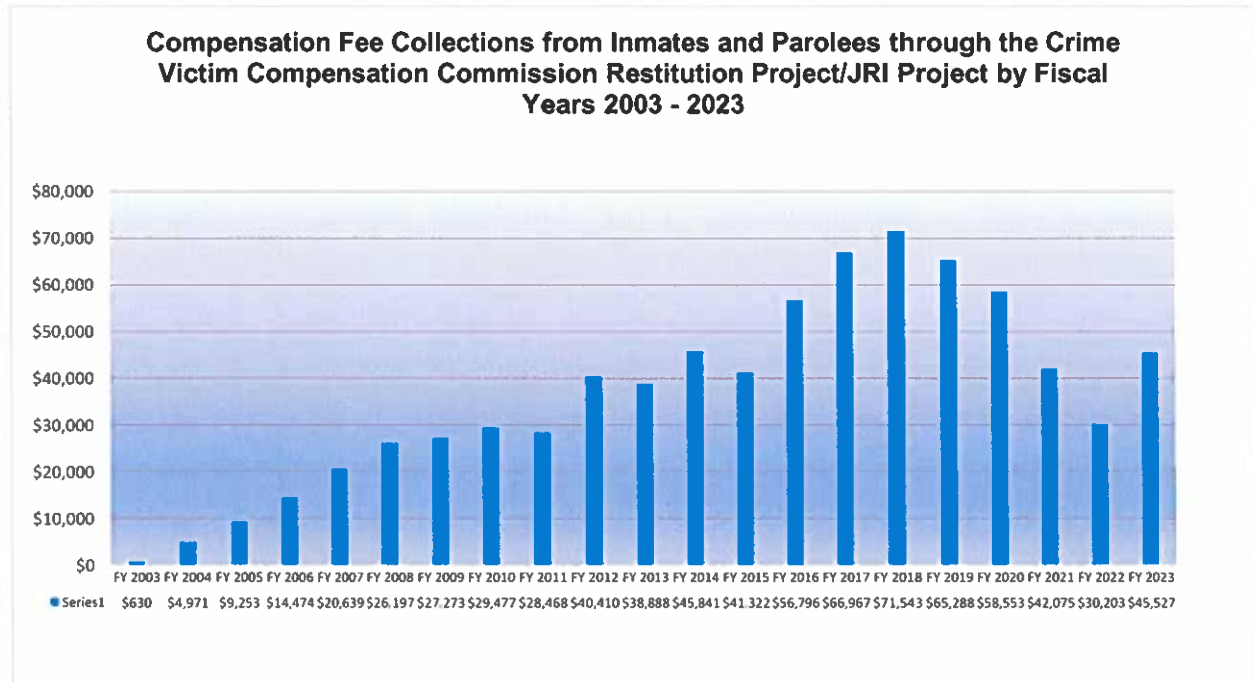
While there was a decline in restitution payments from parolees during the COVID-19 pandemic, FY 2023 data exhibited a successful return to pre-pandemic collection levels. At the close of FY 2023, the total amount of restitution collected from parolees totaled \$121,617.29, which represents a 5% increase over collections from FY 2022. Commission staff continue to work closely with HPA to ensure that court-ordered restitution is collected from parolees.

Restitution Collection by Inmates and Parolees by the Crime Victim Compensation Commission 2003-2023



Compensation Fee Collection from Inmates and Parolees

The Restitution Project also resulted in an increase in the collection of the Compensation Fee from inmates and parolees. In the first fiscal year of the Project (FY 2003), which was only six months (from January 2003-June 2003), the Commission collected \$630.45; in FY 2023, the Commission collected \$45,526.83 in Compensation Fees. Even though the Commission's data shows that inmates can and do pay their court-ordered Compensation Fee, many judges continue to waive the Compensation Fee for inmates believing that they do not have the ability to pay.



Note: The chart used in previous years' Annual Reports reflected the amounts collected and transferred to the Commission's special fund during the respective fiscal year; the current chart reflects the total amount collected during the fiscal year.

Justice Reinvestment Initiative

In 2011, Governor Abercrombie appointed the Commission to serve as a member of the Justice Reinvestment Initiative (JRI) Working Group. The JRI Working Group was comprised of leading state and local officials who worked with the Council of State Governments (CSG) Justice Center in partnership with the Pew Center on the States and the DOJ Bureau of Justice Assistance (BJA), to develop a policy framework to address identified areas of concern within Hawai'i's criminal justice system. Hawai'i became the first state to reinvest substantial money into victim services. Part of the Commission's role as a member of the JRI Working Group was to engage crime victims, survivors, and victim services providers and advocates in identifying key issues and concerns specific to the JRI initiative. The Working Group's policy framework became the basis for the JRI legislation.



The Hawai'i State Legislature passed the Justice Reinvestment Act (Act 139), commonly referred to as the JRI Act, during the 2012 legislative session. Hawai'i's JRI Act included the first investment in comprehensive victim services as a part of JRI in the nation. The JRI investment in victim services made victims' needs and offender accountability key parts of the JRI Act. The primary goals of the JRI victim services component are (1) to ensure victim and community safety; (2) to establish a permanent, self-funded statewide victim notification program (SAVIN); and (3) to ensure victim restitution is ordered and enforced in all eligible cases. The JRI victim services component has since become a national model. The Commission's Executive Director's efforts to ensure the passage of the JRI investment in victim services was recognized when she received the DOJ Office for Victims of Crime, Crime Victim Financial Restoration Award in April 2013 from United States Attorney General Eric Holder.

To meet crime victim needs and increase offender accountability, the JRI Act increased the amount of restitution to be paid by inmates and created 22 victim service positions. Prior to the JRI Act, Section 353-22.5, Hawai'i Revised Statutes, required the director of public safety to deduct 10% of inmate wages to satisfy restitution orders. The JRI Act increased the amount to be deducted from inmate accounts to 25% of all earnings, deposits and credits and increasing the frequency of the disbursements to crime victims. To assist victims with collection of restitution and coordination of safety planning and notification, fifteen positions for county-based victim advocates were created; two positions were created to be part of the corrections-based victim service program within PSD; and five positions were created within the Commission to establish a data driven restitution accountability program that monitors restitution collections and disbursements, and identifies problems and issues with restitution collection. The JRI Act also appropriated funding for the Commission to create a comprehensive computer database to track restitution orders, collections and payments to victims. An additional \$100,000 grant from the DOJ, BJA was secured by the Commission for the database.

To assist in the implementation of the Restitution and Victim Service components of the JRI Act, the Commission was selected as the lead co-chair of the two JRI Implementation Working Group

subcommittees – the JRI Restitution Workgroup and the JRI Victim Services Workgroup. The JRI Restitution Workgroup and the JRI Victim Services Workgroup are comprised of representatives from the Judiciary, Victim Witness Programs of the county prosecutor’s offices, PSD, the Hawai‘i Paroling Authority, and the Department of the Attorney General. The JRI Victim Services Workgroup also includes representatives of the victim services community.

JRI Restitution Workgroup:

The JRI Restitution Workgroup established the following goals:

- 1) Facilitate the implementation of victim restitution collection pursuant to Section 353-22.6, Hawai‘i Revised Statutes, which was amended by Act 139 on July 1, 2012, to increase the amount of restitution payable by inmates from 10% of inmates wages to 25% of all funds deposited into an inmate’s account;
- 2) Address issues that impact the timely and accurate collection of restitution by improving interagency collaboration and establishing policies and procedures to ensure consistent restitution collection; and
- 3) Develop a statewide restitution database within the Commission to provide policy makers with comprehensive data about court-ordered restitution.

The JRI Restitution Workgroup was tasked with monitoring the effective implementation of Section 353-22.6, Hawai‘i Revised Statutes, as amended by the JRI Act. The JRI Act increased the amount of restitution payable by inmates from 10% of inmates wages to 25% of all funds deposited into an inmate’s account. The JRI Restitution Workgroup, in conjunction with PSD, identified the issues affecting the implementation of the 25% deduction of inmate earnings, deposits, and credits, and worked together to find solutions to the issues.

The workgroup identified the following issues affecting the implementation of the 25% deduction of inmate earnings, deposits, and credits:

- The 25% deduction of inmate earnings, deposits, and credits has not been consistently implemented in all of the correctional facilities.
- PSD does not consistently identify all restitution cases.
- PSD does not receive all of the necessary court documents.
- After the statute was amended to require the 25% restitution deduction, some judges continued to order inmates to pay no restitution at all or at a rate less than 25%, despite the legislature’s intent to increase the restitution collection to 25%. This issue was prospectively resolved in 2016 by Act 231 which mandates that inmates pay 25% of their earnings, deposits and credits when they are incarcerated, regardless of any court order requiring a lesser payment.
- There was no restitution policy for the payment of restitution by inmates on furlough status. The Commission requested an Attorney General’s opinion on this issue. Based on the Attorney General’s opinion, and with the leadership

of PSD's Director, PSD adopted a policy that 25% of an inmate's furlough income be collected to satisfy the inmate's restitution obligation. A total of \$665,986.63 was collected from inmates on furlough beginning in FY 2016 through FY 2022.

- A software modification that allows PSD to specify a restitution deduction rate for each individual inmate resolved an issue with PSD's Inmate Trust Accounting System that could not accommodate the varying restitution deduction amounts.

The JRI Restitution Workgroup continues to work collaboratively with PSD and the Judiciary to remove obstacles to timely, consistent, and accurate collection of restitution. The Workgroup monitors progress, helps to identify the agencies that need to be included in the discussions, and assists in bringing the necessary parties together in a collaborative atmosphere.

The JRI Restitution Workgroup oversaw the creation of the Commission's web-based Compensation and Restitution Management System (CRMS) that improves the efficiency of processing restitution payments and enables access to remote users within PSD and the Paroling Authority. In February 2016, the Commission deployed CRMS for use by Commission staff and remote users throughout PSD and the Paroling Authority. The system features custom case management tools, streamlined payment processing, and expanded data collection and enhanced reporting capabilities which enable data-driven analysis of the effectiveness of restitution collection from inmates and parolees in Hawai'i.

An interagency partnership with the Hawai'i Criminal Justice Data Center (HCJDC) has also allowed the development of a case-level data-sharing interface between the Criminal Justice Data Center's Criminal Justice Information System (CJIS-Hawai'i) and CRMS. Information about the amount of restitution ordered statewide is downloaded quarterly from CJIS to CRMS where it is linked to case-level data about the amount of restitution paid by offenders.

Completion of the Commission's restitution database provided an opportunity for analysis of an unprecedented, statewide restitution dataset that helps to inform the public, policy makers and policy implementers about the status of restitution management in the State of Hawai'i. In March 2017, the Commission contracted with CSG to conduct an in-depth data analysis about statewide restitution orders and about the collection of restitution from inmates and parolees throughout Hawai'i. CSG, in conjunction with the Office of the Lieutenant Governor, presented their findings for policy makers and practitioners from PSD, the Paroling Authority, the Judiciary, and the Hawai'i State Legislature. The final report and presentation were released in February 2018.

In April 2019, the Commission contracted with CSG to update the 2017 data analysis about statewide restitution orders and collections from inmates and parolees. CSG prepared presentation materials and a publication regarding their findings to be shared with local stakeholders and other interested parties nationally. CSG assisted the Commission with establishing automated data dashboard reports to enable more efficient sharing of restitution data

with the Commission's partners. The final presentation materials, publication, and updated data were released in December 2021.

The Commission was instrumental in securing a federal VOCA grant, through the Hawai'i Department of the Attorney General, to centralize PSD's restitution operations for timely collection and disbursement of court-ordered inmate restitution owed to crime victims and payees. The VOCA grant provides funding for PSD staff to coordinate/manage restitution collection and assist crime victims and the public with information and referrals regarding victims' rights, restitution, compensation, the criminal justice process, and resources in the community. The Commission provides on-going technical assistance and administrative support to the VOCA-funded staff under a Memorandum of Agreement (MOA) that outlines the roles and responsibilities of the Commission and PSD. The Commission facilitates monthly meetings with PSD's VOCA-funded staff to discuss the status of the project's goals and objectives and to address any issues impacting the collection of statutorily mandated restitution.

In November 2017, the Commission was awarded a Victims of Crime Act-Statistical Analysis Center (VOCA-SAC) Partnership Grant from the Department of Justice, Center for Victim Research. The goals of the VOCA-SAC Partnership Grant are two-fold: (1) to foster collaboration between victim service practitioners and researchers; and (2) to increase the availability and utility of research evidence about victim service policies, programs and practices. The Commission partnered with Chaminade University of Honolulu's (CUH) Criminology and Criminal Justice Program to collect data about restitution orders and collections from a sample of cases where the Commission awarded compensation to crime victims and requested restitution from offenders in return. The data was analyzed to identify potential gaps in the criminal justice system where restitution is not being enforced as required by law and in accordance with victims' statutory rights. Through this data, the Commission identified a significant gap between when the offender was ordered to pay restitution and when the offender made their first restitution payment. The PSD VOCA grant has addressed this issue.

Hawaii Criminal Justice Data Center – CJIS Database Issues

Since 2013, the Commission has received sentencing data from Hawai'i Criminal Justice Data Center's (HCJDC) Criminal Justice Information System (CJIS-Hawai'i) database pursuant to a data-sharing Memorandum of Agreement. The CJIS-Hawai'i data enables the Commission to work with partner agencies in developing policies to ensure that restitution orders are enforced and collections are made in a consistent and timely manner. Through the Commission's partnership with CSG, the Commission observed a decrease in the quality and quantity of restitution-related data received from HCJDC in recent years. The Commission has not been able to ascertain the reason for the decline in the quality and quantity of data. The decline has impacted the Commission's ability to access complete information that accurately reflects victim restitution trends within the criminal justice system in Hawai'i. Currently, the Commission is unable to provide policymakers with accurate aggregate-level restitution data to evaluate the effectiveness of victim restitution management within the state and to inform policy decisions about the ordering and enforcement of restitution.

Given the decrease in the quantity and quality of restitution-related data in recent years, inclusion of the Commission in the recently formed Criminal Justice Data Sharing Working Group would be vital to ensure that accurate and complete restitution data continues to be available to policymakers and other relevant stakeholders.

JRI Victim Services Workgroup:

As co-chair of the JRI Victim Services Workgroup, the Commission worked with the other members of the workgroup to address and accomplish the following three goals:

Goal 1: Establish A Correction Based Victim Services Program Within The Department Of Public Safety To Coordinate With County Victim Services Programs Regarding Victim And Community Safety Planning And To Develop A Victim Impact Panel That Promotes Offender Accountability.

In July 2012, JRI authorized the creation of a Correction Based Victim Services Program (CBVS Program) within PSD and created staff positions for a CBVS Program. At that time, Hawai'i was the only state without a corrections-based victim service program. Hawai'i's CBVS Program is envisioned to include the SAVIN Program to coordinate with community victim service providers to ensure that victims receive timely notification of offender custody status as required by HRS §801D-4, and have appropriate safety planning, educate offenders about the impact of the crime on victims through victim impact panels, and ensure that victims are protected from harassment by incarcerated offenders.

To facilitate the creation of a CBVS Program, the Commission secured technical assistance from the National Institute of Corrections (NIC) to develop a strategic plan for the creation of a CBVS Program. The Commission coordinated the Strategic Planning Meeting bringing together the NIC facilitator with crime victims, victim witness coordinators from the four counties, statewide victim service providers, members of the criminal justice community, and personnel from PSD. The strategic plan's goals included:

- Improve the post-conviction victim notification services (SAVIN).
- Implement an impact of crime program for offenders within PSD.
- Assure inmate accountability in fulfilling restitution obligations to crime victims.

In April 2016, focus groups were conducted on Maui, Oahu, Hawai'i, and Kauai to gain input on how the post-conviction needs of crime victims could be better met. Their input helped shape how a CBVS Program will achieve the strategic plan's goals.

In the Spring of 2016, as part of a pilot project and in partnership with PSD and the Hawai‘i County Office of the Prosecuting Attorney, Victim Impact Classes (VIC) were held. VICs created a safe environment for several crime victims to share with inmates how they were impacted by the crimes committed against them. Sharing their experiences provided a healing opportunity for the crime victims. And for many inmates, this was the first time that they confronted how their crimes adversely affected their victims. Feeling empathy for others assists inmates in their rehabilitation and helps to prevent the commission of future crimes.

“It was hard to go back and think about, talk about, kinda relive that experience but it also reminded me that I am strong and a survivor.”

Crime Victim Speaker

“It was not only the best class that I ever took while in prison, but the only class that made me see the other side of the people we hurt.”

Inmate Participant

In early 2017, PSD and the JRI Victim Services Workgroup discussed the need for a domestic violence intervention (DVI) program for domestic violence offenders in prison or under community supervision (furlough) and received training from a consultant who had established DVI and victim services for the Minnesota Department of Corrections. In 2018, PSD piloted the project at Kulani Correctional Facility (KCF) on the Big Island. The project used the Emerge Model, a nationally recognized program that incorporates abuser education groups, individual counseling, and victim services. Services to the victims and families of the inmates participating in the DVI were coordinated between PSD, a non-profit provider (Child and Family Services), and the Hawai‘i County Office of the Prosecuting Attorney Victim Assistance Program. The Program did not survive the shutdown due to the COVID-19 pandemic.

Goal 2: Create A Self-Funded, Sustainable, Victim-Centered SAVIN Program Which Provides Victim Notification Of Changes In Offender Custody Status And Parole Hearing Notices, And Convene The SAVIN Governance Committee Which Is Tasked With Ensuring That The SAVIN Program Implementation Is Victim Centered.

HRS § 801D-4, provides crime victims and witnesses with the right, upon request, to be notified by PSD of changes in the custody status of the offender. Prior to 2008, PSD provided manual notification through the county victim assistance programs in the county Prosecutors’ Offices. This manual notification system was not uniformly applied in each of the counties, was only available during regular business hours, and resulted, in some cases, with untimely notification made to victims and witnesses. In order to address these concerns, PSD applied for and, in 2008, received federal grant funds to establish SAVIN. The federally-

funded SAVIN Program was temporary until JRI legislation created the permanent SAVIN program and established the SAVIN Governance Committee.

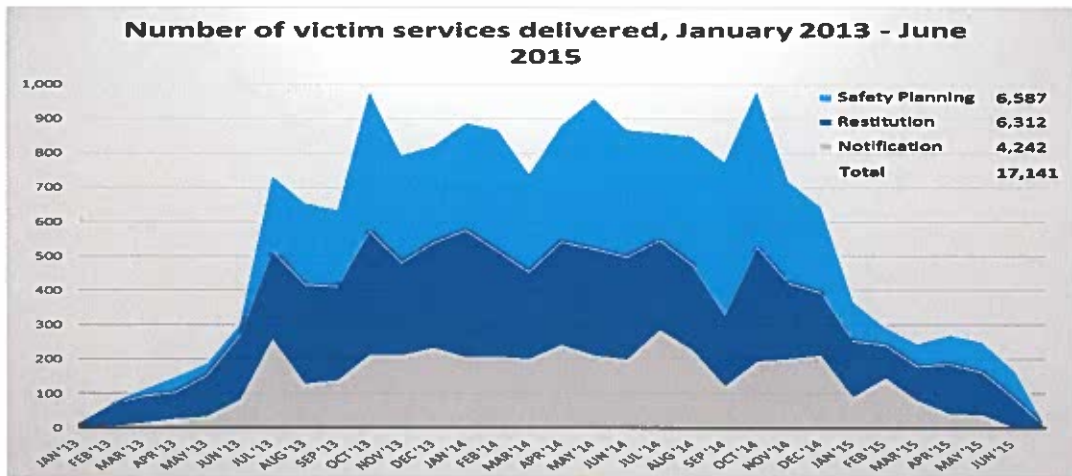
SAVIN is an essential element of JRI. The ability of crime victims to have input in decision making about the appropriateness of an offender's release, and the impact of the offender's release on the victim's safety, as well as on the safety of the community at large, is dependent on timely notification of custody status. Since its establishment, SAVIN has provided thousands of crime victims, witnesses, survivors, victim service providers, law enforcement agencies, and concerned members of the public with automatic, timely notification in advance of changes in an offender's custody status.

In conformity with the DOJ BJA standards, JRI legislation created the SAVIN Governance Committee whose mission is to ensure that SAVIN is victim centered. The Commission chairs the SAVIN Governance Committee. The Committee is comprised of county victim service providers and advocates, crime victims, technology experts, members of the criminal justice community, and the Commission's Executive Director. The SAVIN Governance Committee's purpose is to ensure that the implementation of the SAVIN Program is based on victim-focused principles of victim/survivor safety, confidentiality, and autonomy while maintaining the balance between agency-level decision-making and broad-based input from the participants and users of the SAVIN program which includes victims and survivors.

Goal 3: Establish JRI Victim Service Positions Within The County Prosecutor's Offices To Ensure Information Sharing Within The Victim Services Programs And To Assist Victims With Safety Planning, Restitution, And Offender Custody Status Notification

JRI funded fifteen victim service positions within the four county Victim Witness Assistance Programs. These positions were established to assist and inform victims about safety planning, restitution recovery, and offender custody status notification.

The following chart shows the impact that the fifteen positions had on victim services.



During the 2014 legislative session only \$200,000.00, of the \$794,595.00 necessary to fund the fifteen positions, was appropriated. No funds were appropriated by the legislature during its 2015 session. In order to ensure that victim services were continued, the Department of the Attorney General pledged federal VOCA grant funds from the DOJ Office for Victims of Crime. Unfortunately, the availability of federal grant funds has continued to decrease since then. As a result, VOCA grant funds are limited and may no longer be available to fund these positions.

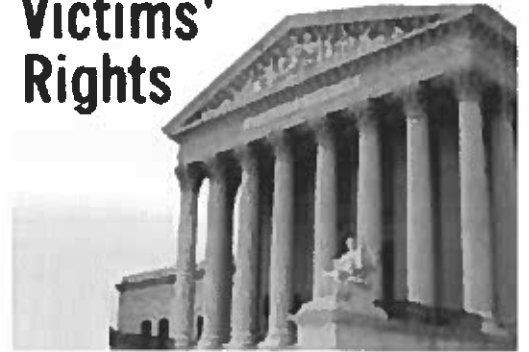
The VOCA Restitution Collection Project is a result of many years of partnership and collaboration between PSD and the Commission. The VOCA grant, with the prospect of continued funding for positions at PSD, complements the four county victim assistance programs while improving restitution collection to comply with statutory obligations.

The collaborative efforts of the JRI Restitution and the JRI Victim Services Workgroups, together with the leadership and commitment of the Director of PSD, have led to a significant increase in restitution collections and increased services for Hawai'i's crime victims.

CVCC-HPA Crime Victim Advocacy Project

Hawai'i was the only state without a corrections-based victim services program. In 2019, a national post-conviction victim advocate and program development consultant was invited to work with Hawai'i's victim services community to identify gaps in existing services and opportunities to establish a program within PSD. The strategic plan identified the fragmentation of victim services in Hawai'i as a significant barrier to providing quality services to victims.

Victims' Rights



The National Association of Victim Assistance in Correction's (NAVAC) 2021 *National Survey of Post-Conviction Victim Services* also found that post-conviction victim/survivor services were often hard to access due to insitutional barriers, including a lack of prioritization of victim concerns within corrections and parole, fragmentation of services, a lack of awareness of the rights of victims/survivors, a lack of access to safety planning and other direct services that left the safety and other needs of victims largely unaddressed.

To address these issues, the Commission collaborated with HPA to submit a VOCA Assistance Grant proposal to establish a corrections-based program to provide direct victim services during the parole process. The Commission was awarded a 2-year VOCA Victim Assistance Grant from OVC. The goals of the CVCC-HPA Crime Victim Advocacy Project were to ensure crime victim needs, community safety, and offender accountability are in the forefront of corrections-based practices in Hawai'i from the time an offender is incarcerated, through parole, and upon release into our community. The Project supported crime victims by providing the following services: assistance/follow up to restitution/compensation application, safety planning, education on victims' rights and/or information on community referrals. The grant funding was for the period from July 1, 2020, through June 30, 2022.

While grant funding to continue the Project was not renewed, the Project demonstrated the need for victim services during the post-conviction process. The Commission and PSD committed to continuing this Project and are working together on an initiative to create a joint post-conviction victim service program to ensure that crime victim needs, community safety, and offender accountability are in the forefront of operational practices in Hawai'i from the time an offender is incarcerated through their release into the community.

Assessment and Collection of the Mandatory Crime Victim Compensation Fee

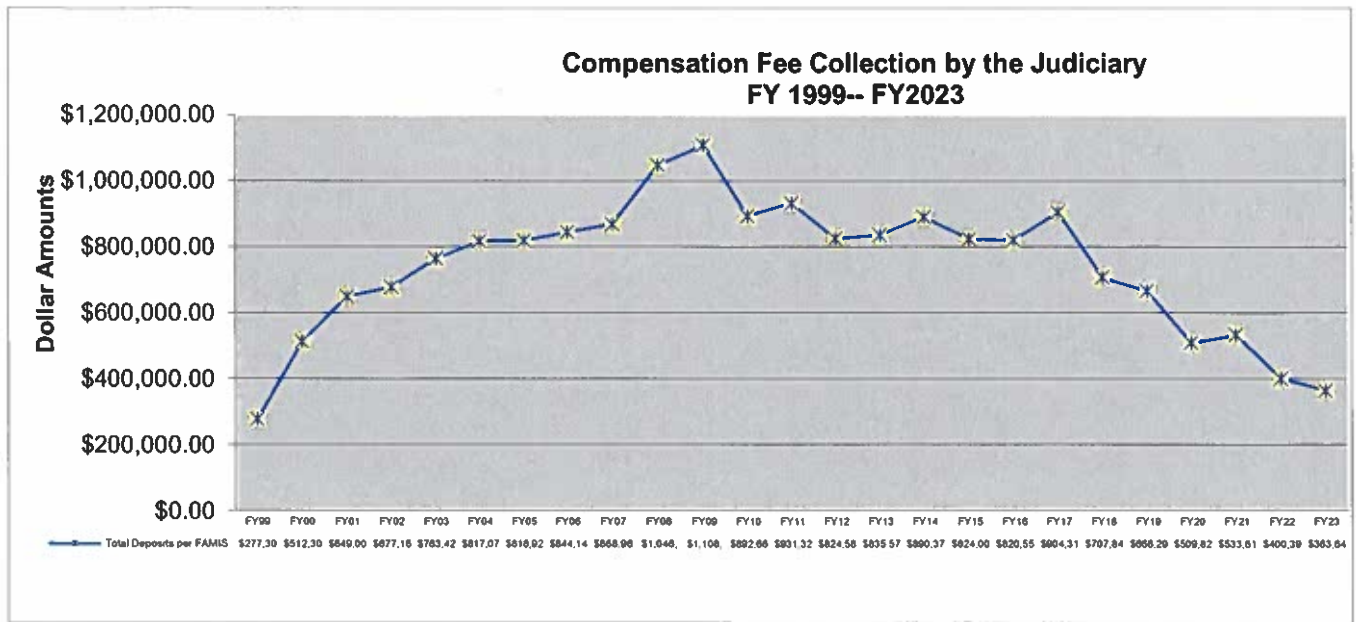
In 1998, the Legislature created the Crime Victim Compensation Fee (the Compensation Fee) to act as a funding base so that the Commission could become fiscally self-sufficient. The Judiciary was tasked with assessing and collecting the Compensation Fee. Unfortunately, by 2022, the Commission was on the verge of closing due to Compensation Fee collection shortfalls over many years by the Judiciary together with the effects of the COVID-19 pandemic.

In FY 2022, the Legislature saved the Commission from closing by providing general funds for the Commission's staff positions. The Legislature left the Compensation Fee intact to fund compensation payments to victims of violent crime and survivors. The Compensation Fee is now the primary funding source for compensation payments made to victims of violent crime.

Based on the Judiciary's recent collection patterns, the Commission is concerned that, going forward, Compensation Fee collections will be insufficient to cover compensation payments for victims of violent crime. In FY 2023, the Judiciary collected only \$363,640 in Compensation Fees. The Judiciary's collection of over one million dollars in Compensation Fees (\$1,020,690 in FY 2008 and \$1,080,897 in FY 2009) demonstrates that offenders can pay the Compensation Fee if it is ordered.

A 2022 Hawai'i Supreme Court decision that precludes judges from considering an offender's future ability to pay the Compensation Fee will further reduce Compensation Fee collections by the Judiciary.

Maintaining a consistent and adequate source of non-tax revenue to fund compensation for crime victims continues to be an important fiscal issue facing the Commission. The Commission will continue to monitor and report to the Legislature on Compensation Fee collections by the Judiciary.



Historical Background

The mandatory Compensation Fee must be assessed by judges against every offender who is convicted of, or who enters a deferred plea (DAG/DANC) to, a petty misdemeanor, misdemeanor, or felony, and is able to pay the fee.⁶ The Judiciary is responsible for collecting the Compensation Fee.

Since the implementation of the Compensation Fee in 1998, the Commission encountered significant barriers to collecting the Compensation Fee. For fiscal years 1999, 2001, and 2002 combined, the Judiciary fell nearly one million dollars short of its own estimates for Compensation Fee collections. After 2002, the Judiciary simply ceased providing estimates for Compensation Fee collections. At that time, courtroom surveys revealed that judges were not ordering the Compensation Fee in all eligible cases. For example, judges were (1) waiving the Compensation Fee but assessing fines with lower priority; (2) not assessing the Compensation Fee for each eligible offense committed by the same defendant; or (3) unaware of the Compensation Fee altogether.

⁶HRS 351-62.6 Compensation Fee. (a) The court shall impose a compensation fee upon every defendant who has been convicted or who has entered a plea under section 853-1 and who is or will be able to pay the compensation fee. The amount of the compensation fee shall be commensurate with the seriousness of the offense as follows: (1) Not less than \$105 nor more than \$505 for a felony; (2) \$55 for a misdemeanor; and (3) \$30 for a petty misdemeanor.

Section 351-62.6, Hawai'i Revised Statutes, provides that the court shall assess a Compensation Fee against every convicted offender, or offender who enters a deferred plea, and who is or will be able to pay the Fee. Fees are assessed as follows:

1. a \$30 fee for a petty misdemeanor;
2. a \$55 fee for a misdemeanor; and
3. a \$105 to \$505 fee for a felony.

When attempts to collaborate with the Judiciary failed in 2005, the Legislature acted by increasing the Crime Victim Compensation Fee by five dollars (\$5.00) in all crime categories. The Judiciary's collection of the Compensation Fee again fell short of anticipated collection increases. Concerned that insufficient funds were being collected, the Legislature passed a resolution in 2007 requiring the Judiciary to report its progress in ordering and collecting the Compensation Fee. According to the Judiciary's response, the Compensation Fee was ordered in 79%, and waived in 21%, of eligible cases.

As a result of the Legislature holding the Judiciary accountable, collections from the Compensation Fee increased in FY 2008 and FY 2009. However, collections dropped off in FY 2010, FY 2011 and FY 2012. In FY 2013, collections dropped to a ten-year low of \$788,139. In FY 2014, collections increased slightly to \$811,806; since then, collections have continued to drop.

In FY 2020, the Judiciary collected \$509,823 in Compensation Fees - the lowest collection since FY 2001. In FY 2021, Compensation Fee collections rose slightly to \$533,612. In FY 2023, Compensation Fee collections continued to decline and dropped to \$363,640, the second lowest it has been since the creation of the Fee.

Due to concerns about the unanticipated decline in Compensation Fee collections, in 2022 the Commission conducted a brief survey of misdemeanor cases from the District Family Court of the First and Fifth Circuits. The survey found that in the District Family Court of the First Circuit (Honolulu), the Compensation Fee was ordered in only 24% of the cases. In the District Family Court of the Fifth Circuit (Kauai), the Compensation Fee was ordered in 100% of the cases.

The disparity in Compensation Fee orders between the First and Fifth District Family Court cases - 100% vs. 24% - highlights the disparate collection practices across the jurisdictions and suggests that the Judiciary applies no uniform standards in ordering the Compensation Fee.

The Commission is acutely aware that its ability to assist crime victims depends on judges ordering the Compensation Fee, and the Judiciary successfully collecting the Compensation Fee from offenders in all eligible cases. For this reason, the Commission remains committed to its efforts to ensure that the Compensation Fee is assessed by judges and collected by the Judiciary in all eligible cases.



Conclusion

The Commission continues to pursue strategies to further improve services to crime victims and to mitigate the costly and emotionally devastating impact of violent crime on citizens and visitors through continued collaborative efforts.

STATE OF HAWAII
DEPARTMENT OF PUBLIC SAFETY
CRIME VICTIM COMPENSATION COMMISSION
ANNUAL REPORT
July 1, 2022 to July 1, 2023

Case #	Victim Sex	Victim Age	Race/Ethnicity	Crime	Decision	Remarks	Total Award
Hawaii - Hilo	00-0543	Male	9 White/Caucasian (not Portugese)	AC - Assault, Child	Award		\$500.00
	19-0240	Male	52 White/Caucasian (not Portugese)	AA - Assault, Adult	Award		\$300.00
	19-0472	Female	14 White/Caucasian (not Portugese)	SAC - Sexual Assault, Child	Award		\$400.00
	19-0736	Female	42 Puerto Rican/Latino	AAF - Assault, Adult by Family Member	Award		\$100.00
	20-0004	Female	42 Hispanic	AAF - Assault, Adult by Family Member	Award		\$350.00
	20-0076	Female	21 Unknown	AA - Assault, Adult	Award		\$18,571.79
	20-0111	Female	29 Hawaiian	SAA - Sexual Assault, Adult	Award		\$400.00
	20-0136	Female	29 Other	AAF - Assault, Adult by Family Member	Award		\$150.00
	20-0260	Female	25 Filipino	SAA - Sexual Assault, Adult	Award		\$125.00
	20-0292	Female	17 Unknown	SACF - Sexual Assault, Child by Family	Award		\$125.00
	20-0324	Female	38 Japanese	SAA - Sexual Assault, Adult	Award		\$100.00
	20-0476	Female	30 Filipino	AAF - Assault, Adult by Family Member	Award		\$100.00
	20-0485	Male	30 Hispanic	AA - Assault, Adult	Award		\$25.00
	20-0504	Male	6 Multiracial	SACF - Sexual Assault, Child by Family	Award		\$200.00
	20-0505	Female	3 Multiracial	SACF - Sexual Assault, Child by Family	Award		\$200.00
	20-0542	Female	18 Multiracial	AA - Assault, Adult	Award		\$50.00
	21-0044	Male	38 Unknown	HAF - Homicide of Adult by Family Member	Award		\$1,985.05
	21-0075	Male	32 Filipino	AA - Assault, Adult	Award		\$50.00
	21-0121	Male	58 White/Caucasian (not Portugese)	AA - Assault, Adult	Award		\$25.00
	21-0122	Male	37 White/Caucasian (not Portugese)	SAA - Sexual Assault, Adult	Award		\$50.00
	21-0149	Female	36 Unknown	AA - Assault, Adult	Award		\$25.00
	21-0154	Male	7 Samoan	ACF - Assault, Child by Family Member	Award		\$100.00
	21-0162	Female	34 Multiracial	AAF - Assault, Adult by Family Member	Denial	IC - Improper Claim	\$0.00
	21-0191	Female	30 Puerto Rican/Latino	AAF - Assault, Adult by Family Member	Award		\$100.00
	21-0192	Female	31 Puerto Rican/Latino	AAF - Assault, Adult by Family Member	Award		\$125.00
	21-0197	Male	20 Hawaiian	AAF - Assault, Adult by Family Member	Award		\$50.00
	21-0206	Male	68 White/Caucasian (not Portugese)	AA - Assault, Adult	Award		\$277.71
	21-0332	Female	29 White/Caucasian (not Portugese)	SAA - Sexual Assault, Adult	Denial	CS - Collateral Source	\$0.00
	21-0334	Female	7 White/Caucasian (not Portugese)	SAC - Sexual Assault, Child	Award		\$200.00
	21-0345	Female	9 Japanese	ACF - Assault, Child by Family Member	Denial	CS - Collateral Source	\$0.00
	21-0399	Male	19 Japanese	AA - Assault, Adult	Denial	CS - Collateral Source	\$0.00

STATE OF HAWAII
DEPARTMENT OF PUBLIC SAFETY
CRIME VICTIM COMPENSATION COMMISSION
ANNUAL REPORT
July 1, 2022 to July 1, 2023

Case #	Victim Sex	Victim Age	Race/Ethnicity	Crime	Decision	Remarks	Total Award
21-0400	Female	14	Hawaiian	SAC - Sexual Assault, Child	Award		\$175.00
22-0094	Male	56	Multiracial	AA - Assault, Adult	Award		\$25.00
22-0097	Female	38	White/Caucasian (not Portugese)	AAF - Assault, Adult by Family Member	Award		\$75.00
22-0125	Female	55	Japanese	AAF - Assault, Adult by Family Member	Award		\$615.07
22-0155	Female	39	Multiracial	AAF - Assault, Adult by Family Member	Award		\$125.00
22-0161	Female	11	Multiracial	SACF - Sexual Assault, Child by Family	Award		\$200.00
22-0164	Female	32	White/Caucasian (not Portugese)	NCC - Not a Covered Crime	Denial	NCC - Not a Covered Case	\$0.00
22-0174	Female	20	Hawaiian	SAA - Sexual Assault, Adult	Award		\$125.00
22-0193	Female	16	White/Caucasian (not Portugese)	SAC - Sexual Assault, Child	Award		\$75.00
22-0194	Male	35	Unknown	AA - Assault, Adult	Award		\$100.00
22-0199	Female	40	Other	NII - Negligent Injury I	Denial	CS - Collateral Source	\$0.00
22-0201	Male	38	Multiracial	AA - Assault, Adult	Award		\$1,270.91
22-0202	Female	25	White/Caucasian (not Portugese)	AA - Assault, Adult	Award		\$7,469.54
22-0210	Male	65	Portugese	AA - Assault, Adult	Award		\$218.37
22-0212	Female	45	White/Caucasian (not Portugese)	AA - Assault, Adult	Award		\$3,659.67
22-0214	Male	48	Other	AAF - Assault, Adult by Family Member	Award		\$250.00
22-0217	Male	42	Multiracial	AA - Assault, Adult	Award		\$685.48
22-0219	Female	46	Filipino	AAF - Assault, Adult by Family Member	Award		\$150.00
22-0220	Female	49	White/Caucasian (not Portugese)	AAF - Assault, Adult by Family Member	Award		\$200.00
22-0221	Male	18	Black/African American	AA - Assault, Adult	Award		\$200.00
22-0222	Male	33	Multiracial	AA - Assault, Adult	Award		\$50.00
22-0223	Male	38	Hispanic	AA - Assault, Adult	Award		\$50.00
22-0228	Male	59	Japanese	ATM - Attempted Murder	Award		\$200.00
22-0234	Female	60	American Indian / Alaska Native	AA - Assault, Adult	Award		\$50.00
22-0236	Female	20	Multiracial	AAF - Assault, Adult by Family Member	Award		\$50.00
22-0247	Female	44	Other	AAF - Assault, Adult by Family Member	Award		\$150.00
22-0250	Female	20	Hawaiian	SAAF - Sexual Assault, Adult by Family	Award		\$125.00
22-0252	Female	52	White/Caucasian (not Portugese)	AA - Assault, Adult	Denial	CS - Collateral Source	\$0.00
22-0253	Female	47	Hawaiian	AAF - Assault, Adult by Family Member	Award		\$100.00
22-0254	Female	33	Multiracial	AA - Assault, Adult	Award		\$50.00
22-0256	Male	31	Hawaiian	Robbery	Denial	NCC - Not a Covered Case	\$0.00

STATE OF HAWAII
DEPARTMENT OF PUBLIC SAFETY
CRIME VICTIM COMPENSATION COMMISSION
ANNUAL REPORT
July 1, 2022 to July 1, 2023

Case #	Victim Sex	Victim Age	Race/Ethnicity	Crime	Decision	Remarks	Total Award
22-0259	Female	62	Unknown	AAF - Assault, Adult by Family Member	Award		\$350.00
22-0260	Female	31	Hawaiian	AAF - Assault, Adult by Family Member	Award		\$200.00
22-0261	Male	18	Multiracial	AA - Assault, Adult	Award		\$250.00
22-0264	Male	63	White/Caucasian (not Portugese)	AA - Assault, Adult	Award		\$100.00
22-0265	Female	27	White/Caucasian (not Portugese)	SAA - Sexual Assault, Adult	Award		\$200.00
22-0266	Female	51	Filipino	AAF - Assault, Adult by Family Member	Award		\$150.00
22-0267	Female	51	Filipino	AAF - Assault, Adult by Family Member	Award		\$150.00
22-0292	Male	41	Filipino	AAF - Assault, Adult by Family Member	Award		\$150.00
22-0303	Female	63	Multiracial	AA - Assault, Adult	Award		\$100.00
22-0304	Female	33	Unknown	AA - Assault, Adult	Denial	INM - Inmate	\$0.00
22-0305	Male	13	Multiracial	ACF - Assault, Child by Family Member	Award		\$150.00
22-0306	Female	47	Multiracial	AAF - Assault, Adult by Family Member	Award		\$150.00
22-0312	Female	38	Hawaiian	SAA - Sexual Assault, Adult	Award		\$300.00
22-0315	Male	53	Puerto Rican/Latino	AA - Assault, Adult	Award		\$300.00
22-0321	Female	14	Other	SAC - Sexual Assault, Child	Award		\$150.00
22-0326	Female	65	White/Caucasian (not Portugese)	SAAF - Sexual Assault, Adult by Family	Award		\$400.00
22-0338	Female	45	Other	AAF - Assault, Adult by Family Member	Award		\$150.00
22-0339	Female	34	Hawaiian	HA - Homicide, Murder, Mans; Adult	Award		\$4,062.83
22-0340	Female	16	Hawaiian	ACF - Assault, Child by Family Member	Award		\$250.00
22-0366	Female	32	Hawaiian	AAF - Assault, Adult by Family Member	Award		\$200.00
22-0368	Female	14	Other	SACF - Sexual Assault, Child by Family	Award		\$400.00
22-0369	Female	32	Hawaiian	AAF - Assault, Adult by Family Member	Award		\$150.00
22-0370	Female	29	Chinese	AA - Assault, Adult	Award		\$50.00
22-0371	Female	39	White/Caucasian (not Portugese)	ATM - Attempted Murder	Denial	NCC - Not a Covered Case	\$0.00
22-0372	Female	21	Filipino	SAA - Sexual Assault, Adult	Award		\$150.00
22-0375	Male	50	Multiracial	AA - Assault, Adult	Denial	CS - Collateral Source	\$0.00
22-0386	Female	59	Other	SAA - Sexual Assault, Adult	Award		\$250.00
22-0388	Female	17	Black/African American	AC - Assault, Child	Award		\$100.00
22-0392	Female	23	Multiracial	SAA - Sexual Assault, Adult	Award		\$265.00
22-0412	Male	42	Hawaiian	ATM - Attempted Murder	Denial	CS - Collateral Source	\$0.00
22-0414	Male	47	White/Caucasian (not Portugese)	AA - Assault, Adult	Award		\$100.00

STATE OF HAWAII
DEPARTMENT OF PUBLIC SAFETY
CRIME VICTIM COMPENSATION COMMISSION
ANNUAL REPORT
July 1, 2022 to July 1, 2023

Case #	Victim Sex	Victim Age	Race/Ethnicity	Crime	Decision	Remarks	Total Award	
22-0415	Male	32	White/Caucasian (not Portugese)	AA - Assault, Adult	Denial	BFP - Beyond Filing Period	\$0.00	
22-0419	Male	40	Hawaiian	AAF - Assault, Adult by Family Member	Award		\$200.00	
23-0005	Female	51	Multiracial	AAF - Assault, Adult by Family Member	Award		\$50.00	
23-0006	Female	52	Multiracial	AAF - Assault, Adult by Family Member	Award		\$300.00	
23-0018	Male	23	Multiracial	HA - Homicide, Murder, Mans; Adult	Award		\$1,041.88	
23-0019	Female	48	Hispanic	AA - Assault, Adult	Award		\$200.00	
23-0048	Male	17	Multiracial	AC - Assault, Child	Denial	CTI - Contributory	\$0.00	
23-0049	Male	16	Multiracial	AC - Assault, Child	Denial	CTI - Contributory	\$0.00	
23-0062	Female	46	Other	SAA - Sexual Assault, Adult	Denial	CS - Collateral Source	\$0.00	
23-0063	Male	21	Unknown	AA - Assault, Adult	Award		\$235.91	
23-0098	Female	27	White/Caucasian (not Portugese)	SAA - Sexual Assault, Adult	Award		\$555.77	
23-0100	Male	55	Hawaiian	AA - Assault, Adult	Denial	CTI - Contributory	\$0.00	
23-0102	Male	42	Hawaiian	ATM - Attempted Murder	Denial	DC - Duplicate Claim	\$0.00	
23-0120	Male	20	Multiracial	AAF - Assault, Adult by Family Member	Award		\$300.00	
23-0124	Female	35	Hawaiian	SAA - Sexual Assault, Adult	Award		\$400.00	
23-0125	Female	33	Multiracial	AAF - Assault, Adult by Family Member	Denial	BFP - Beyond Filing Period	\$0.00	
23-0138	Female	56	Hawaiian	AA - Assault, Adult	Award		\$150.00	
23-0140	Male	55	White/Caucasian (not Portugese)	AA - Assault, Adult	Award		\$100.00	
23-0155	Male	14	White/Caucasian (not Portugese)	AC - Assault, Child	Award		\$120.00	
23-0174	Male	38	Black/African American	AA - Assault, Adult	Award		\$100.00	
23-0176	Male	29	Black/African American	AA - Assault, Adult	Award		\$100.00	
23-0188	Female	23	Multiracial	AA - Assault, Adult	Award		\$100.00	
23-0210	Female	55	Hispanic	AA - Assault, Adult	Denial	CS - Collateral Source	\$0.00	
23-0212	Female	62	Multiracial	AA - Assault, Adult	Award		\$200.00	
23-0213	Female	71	Multiracial	AA - Assault, Adult	Award		\$150.00	
23-0216	Male	65	White/Caucasian (not Portugese)	AA - Assault, Adult	Award		\$250.00	
Hawaii - Kona	19-0670	Female	8	Other	SAC - Sexual Assault, Child	Denial	IC - Improper Claim	\$0.00
	20-0164	Female	23	Hawaiian	AA - Assault, Adult	Denial	CS - Collateral Source	\$0.00
	20-0236	Male	61	White/Caucasian (not Portugese)	AA - Assault, Adult	Award		\$50.00
	20-0280	Male	65	Filipino	AA - Assault, Adult	Denial	CS - Collateral Source	\$0.00
	20-0501	Male	66	Hawaiian	AA - Assault, Adult	Award		\$413.77

STATE OF HAWAII
DEPARTMENT OF PUBLIC SAFETY
CRIME VICTIM COMPENSATION COMMISSION
ANNUAL REPORT
July 1, 2022 to July 1, 2023

Case #	Victim Sex	Victim Age	Race/Ethnicity	Crime	Decision	Remarks	Total Award	
20-0511	Female	13	Hawaiian	SAC - Sexual Assault, Child	Award		\$175.00	
21-0241	Female	36	Hawaiian	AAF - Assault, Adult by Family Member	Award		\$75.00	
21-0261	Male	39	Unknown	ATM - Attempted Murder	Denial	BFP - Beyond Filing Period	\$0.00	
21-0433	Male	64	Unknown	HA - Homicide, Murder, Mans, Adult	Award		\$1,491.72	
22-0141	Male	21	White/Caucasian (not Portugese)	AA - Assault, Adult	Award		\$3,035.24	
22-0153	Female	31	Hawaiian	AA - Assault, Adult	Denial	CS - Collateral Source	\$0.00	
22-0154	Female	30	Hispanic	AA - Assault, Adult	Denial		\$150.00	
22-0218	Male	30	Unknown	HA - Homicide, Murder, Mans, Adult	Award		\$7,282.00	
22-0229	Female	42	White/Caucasian (not Portugese)	AAF - Assault, Adult by Family Member	Award		\$100.00	
22-0263	Male	64	Multiracial	AA - Assault, Adult	Denial	DC - Duplicate Claim	\$0.00	
22-0301	Male	35	Hawaiian	AA - Assault, Adult	Award		\$200.00	
22-0316	Female	53	Chinese	AA - Assault, Adult	Award		\$116.09	
22-0323	Female	29	Multiracial	AAF - Assault, Adult by Family Member	Award		\$150.00	
23-0007	Male	38	White/Caucasian (not Portugese)	AA - Assault, Adult	Award		\$100.00	
23-0045	Female	46	Filipino	AA - Assault, Adult	Award		\$100.00	
23-0099	Female	42	White/Caucasian (not Portugese)	ATM - Attempted Murder	Award		\$250.00	
23-0126	Female	12	Multiracial	SAC - Sexual Assault, Child	Award		\$400.00	
Honolulu - Oahu	17-0654	Male	25	Filipino	AA - Assault, Adult	Award	\$50.00	
	18-0258	Female	46	Multiracial	AA - Assault, Adult	Award	\$100.00	
	19-0108	Female	75	Unknown	AA - Assault, Adult	Award	\$200.00	
	19-0132	Male	47	Multiracial	AA - Assault, Adult	Award	\$50.00	
	19-0165	Female	14	Multiracial	SAC - Sexual Assault, Child	Award	\$100.00	
	19-0190	Female	42	White/Caucasian (not Portugese)	SAA - Sexual Assault, Adult	Award	\$300.00	
	19-0198	Male	16	Black/African American	ACF - Assault, Child by Family Member	Award	\$100.00	
	19-0221	Female	54	White/Caucasian (not Portugese)	AAF - Assault, Adult by Family Member	Denial	NPR - No Police Report	\$0.00
	19-0233	Female	34	Multiracial	SAA - Sexual Assault, Adult	Award	\$350.00	
	19-0290	Male	14	Japanese	AC - Assault, Child	Award	\$100.00	
	19-0411	Male	9	Black/African American	SAC - Sexual Assault, Child	Award	\$400.00	
	19-0425	Female	39	White/Caucasian (not Portugese)	AAF - Assault, Adult by Family Member	Award	\$100.00	
	19-0443	Female	35	Japanese	AAF - Assault, Adult by Family Member	Award	\$387.39	
	19-0454	Female	34	Hawaiian	AAF - Assault, Adult by Family Member	Award	\$287.99	

STATE OF HAWAII
DEPARTMENT OF PUBLIC SAFETY
CRIME VICTIM COMPENSATION COMMISSION
ANNUAL REPORT
July 1, 2022 to July 1, 2023

Case #	Victim Sex	Victim Age	Race/Ethnicity	Crime	Decision	Remarks	Total Award
19-0492	Male	14	Hawaiian	AC - Assault, Child	Award		\$150.00
19-0521	Female	15	Unknown	SAC - Sexual Assault, Child	Award		\$400.00
19-0522	Female	23	Black/African American	AAF - Assault, Adult by Family Member	Award		\$250.00
19-0694	Male	22	Black/African American	SAA - Sexual Assault, Adult	Award		\$200.00
20-0043	Male	40	Puerto Rican/Latino	AA - Assault, Adult	Award		\$7,771.60
20-0048	Female	25	Puerto Rican/Latino	SAA - Sexual Assault, Adult AA - Assault, Adult KID - Kidnapping	Denial	NPR - No Police Report	\$0.00
20-0090	Male	30	Multiracial	AA - Assault, Adult	Denial	CS - Collateral Source	\$0.00
20-0141	Female	58	Hawaiian	AA - Assault, Adult	Award		\$50.00
20-0144	Female	59	Filipino	AA - Assault, Adult	Award		\$100.00
20-0150	Male	48	Other	AAF - Assault, Adult by Family Member	Denial	CS - Collateral Source	\$50.00
20-0161	Female	42	Japanese	AA - Assault, Adult	Award		\$25.00
20-0176	Female	15	Hawaiian	AC - Assault, Child	Denial	CS - Collateral Source	\$0.00
20-0212	Female	57	Filipino	SAA - Sexual Assault, Adult	Denial	CS - Collateral Source	\$0.00
20-0228	Male	32	Hispanic	AA - Assault, Adult	Award		\$100.00
20-0254	Male	65	Japanese	AA - Assault, Adult	Award		\$50.00
20-0258	Female	31	Hawaiian	SAAF - Sexual Assault, Adult by Family	Award		\$175.00
20-0377	Female	27	Japanese	AAF - Assault, Adult by Family Member	Award		\$75.00
20-0379	Male	54	Hawaiian	NCC - Not a Covered Crime	Denial	NCC - Not a Covered Case	\$0.00
20-0381	Male	33	White/Caucasian (not Portugese)	AA - Assault, Adult	Award		\$159.92
20-0479	Female	69	Korean	AA - Assault, Adult	Award		\$305.00
20-0507	Female	61	White/Caucasian (not Portugese)	AA - Assault, Adult	Denial	IC - Improper Claim	\$0.00
20-0543	Female	59	White/Caucasian (not Portugese)	SAA - Sexual Assault, Adult	Award		\$150.00
20-0545	Female	65	Hawaiian	AAF - Assault, Adult by Family Member	Denial	IC - Improper Claim	\$0.00
20-0546	Male	35	Multiracial	AAF - Assault, Adult by Family Member	Denial	IC - Improper Claim	\$0.00
20-0547	Female	28	Hawaiian	AAF - Assault, Adult by Family Member	Denial	IC - Improper Claim	\$0.00
20-0548	Male	4	Hawaiian	AAF - Assault, Child by Family Member	Denial	IC - Improper Claim	\$0.00
21-0127	Male	60	Samoan	AA - Assault, Adult	Award		\$25.00
21-0141	Female	52	White/Caucasian (not Portugese)	AAF - Assault, Adult by Family Member	Award		\$50.00
21-0153	Female	30	Japanese	AA - Assault, Adult	Award		\$51.60
21-0183	Female	20	White/Caucasian (not Portugese)	SAA - Sexual Assault, Adult	Award		\$254.04
21-0196	Female	13	Multiracial	SACF - Sexual Assault, Child by Family	Denial	NPA - Not a Proper Applicant	\$0.00

STATE OF HAWAII
DEPARTMENT OF PUBLIC SAFETY
CRIME VICTIM COMPENSATION COMMISSION
ANNUAL REPORT
July 1, 2022 to July 1, 2023

Case #	Victim Sex	Victim Age	Race/Ethnicity	Crime	Decision	Remarks	Total Award
21-0236	Male	19	Hispanic	HA - Homicide, Murder, Mans; Adult	Award		\$4,000.00
21-0243	Male	34	Samoan	AA - Assault, Adult	Award		\$100.00
21-0251	Female	11	Filipino	SAC - Sexual Assault, Child	Award		\$200.00
21-0279	Male	90	Puerto Rican/Latino	AA - Assault, Adult	Award		\$256.09
21-0289	Male	63	White/Caucasian (not Portugese)	AA - Assault, Adult	Award		\$225.00
21-0292	Male	49	White/Caucasian (not Portugese)	NII - Negligent Injury I	Denial	CS - Collateral Source	\$0.00
21-0295	Female	29	White/Caucasian (not Portugese)	SAA - Sexual Assault, Adult	Award		\$150.00
21-0297	Male	56	Chinese	AA - Assault, Adult	Denial	CS - Collateral Source	\$0.00
21-0300	Male	40	Hawaiian	AA - Assault, Adult	Denial	CS - Collateral Source	\$0.00
21-0301	Male	40	Hawaiian	AA - Assault, Adult	Denial	CS - Collateral Source	\$0.00
21-0305	Female	30	Unknown	KID - Kidnapping	Award		\$250.00
21-0322	Female	39	Multiracial	AAF - Assault, Adult by Family Member	Award		\$250.00
21-0344	Male	54	Puerto Rican/Latino	AA - Assault, Adult	Award		\$100.00
21-0375	Female	47	Hawaiian	SAA - Sexual Assault, Adult	Award		\$125.00
21-0376	Male	32	Unknown	AA - Assault, Adult	Award		\$100.00
21-0426	Male	5	Black/African American	ATMF - Attempted Murder by Family Member	Award		\$150.00
22-0006	Female	30	Filipino	AA - Assault, Adult	Award		\$288.74
22-0022	Female	62	Korean	AA - Assault, Adult	Award		\$50.00
22-0030	Male	66	Korean	AA - Assault, Adult	Award		\$1,473.62
22-0037	Male	34	White/Caucasian (not Portugese)	SAA - Sexual Assault, Adult	Denial	CS - Collateral Source	\$0.00
22-0044	Female	24	Hawaiian	AAF - Assault, Adult by Family Member	Award		\$100.00
22-0045	Male	52	White/Caucasian (not Portugese)	AA - Assault, Adult	Award		\$50.00
22-0050	Female	13	Unknown	SACF - Sexual Assault, Child by Family	Award		\$100.00
22-0054	Male	4	Unknown	SACF - Sexual Assault, Child by Family	Award		\$816.50
22-0057	Female	21	Hawaiian	AAF - Assault, Adult by Family Member	Award		\$50.00
22-0058	Female	21	Hawaiian	AAF - Assault, Adult by Family Member	Award		\$75.00
22-0078	Female	29	Multiracial	AAF - Assault, Adult by Family Member	Denial	CS - Collateral Source	\$0.00
22-0084	Female	18	Black/African American	SAA - Sexual Assault, Adult	Award		\$490.00
22-0086	Male	29	Multiracial	ATM - Attempted Murder	Denial	CTI - Contributory	\$0.00
22-0088	Male	29	Other	SAA - Sexual Assault, Adult	Award		\$25.00
22-0102	Female	12	White/Caucasian (not Portugese)	SAC - Sexual Assault, Child	Award		\$200.00

STATE OF HAWAII
DEPARTMENT OF PUBLIC SAFETY
CRIME VICTIM COMPENSATION COMMISSION
ANNUAL REPORT
July 1, 2022 to July 1, 2023

Case #	Victim Sex	Victim Age	Race/Ethnicity (Portugese)	Crime	Decision	Remarks	Total Award
22-0105	Female	36	Japanese	AA - Assault, Adult	Award		\$50.00
22-0114	Female	37	Other	SAA - Sexual Assault, Adult	Award		\$25.00
22-0124	Female	23	Hawaiian	AA - Assault, Adult	Award		\$31.63
22-0134	Female	38	Multiracial	AA - Assault, Adult	Denial	CS - Collateral Source	\$0.00
22-0135	Male	40	White/Caucasian (not Portugese)	AA - Assault, Adult	Award		\$511.20
22-0138	Female	27	Hawaiian	AA - Assault, Adult	Denial	CS - Collateral Source	\$0.00
22-0139	Male	36	White/Caucasian (not Portugese)	SAA - Sexual Assault, Adult	Award		\$3,400.00
22-0140	Female	25	Hispanic	NI2 - Negligent Injury II	Denial	CS - Collateral Source	\$0.00
22-0146	Female	59	Hawaiian	AA - Assault, Adult	Award		\$75.00
22-0147	Female	13	Hawaiian	SACF - Sexual Assault, Child by Family	Award		\$100.00
22-0148	Female	7	White/Caucasian (not Portugese)	SAC - Sexual Assault, Child	Award		\$0.00
22-0149	Female	9	Hawaiian	SAC - Sexual Assault, Child	Denial	CS - Collateral Source	\$0.00
22-0151	Female	14	Hawaiian	SAC - Sexual Assault, Child	Award		\$175.00
22-0152	Female	45	Multiracial	AA - Assault, Adult	Award		\$1,360.51
22-0157	Female	37	Chinese	AA - Assault, Adult	Award		\$493.83
22-0159	Male	68	White/Caucasian (not Portugese)	AA - Assault, Adult	Award		\$356.44
22-0163	Female	13	Chinese	SAC - Sexual Assault, Child	Award		\$740.00
22-0168	Female	33	White/Caucasian (not Portugese)	AA - Assault, Adult	Award		\$25.00
22-0170	Male	36	Japanese	AA - Assault, Adult	Award		\$25.00
22-0172	Male	18	Hawaiian	HA - Homicide, Murder, Mans; Adult	Award		\$4,220.22
22-0175	Female	45	Multiracial	AAF - Assault, Adult by Family Member	Award		\$50.00
22-0180	Female	25	White/Caucasian (not Portugese)	AA - Assault, Adult	Award		\$50.00
22-0182	Female	22	Other	AA - Assault, Adult	Award		\$25.00
22-0183	Female	38	American Indian / Alaska Native	AA - Assault, Adult	Award		\$50.00
22-0184	Female	38	Other	AAF - Assault, Adult by Family Member	Award		\$125.00
22-0187	Female	30	White/Caucasian (not Portugese)	KID - Kidnapping	Award		\$200.00
22-0188	Female	43	Hawaiian	ATM - Attempted Murder	Denial	IC - Improper Claim	\$0.00
22-0190	Female	69	Unknown	AA - Assault, Adult	Denial	CS - Collateral Source	\$0.00
22-0191	Female	26	White/Caucasian (not Portugese)	AA - Assault, Adult	Award		\$68.91
22-0192	Female	42	Other	AAF - Assault, Adult by Family Member	Award		\$50.00
22-0195	Female	43	Filipino	AAF - Assault, Adult by Family Member	Denial	CS - Collateral Source	\$0.00

STATE OF HAWAII
DEPARTMENT OF PUBLIC SAFETY
CRIME VICTIM COMPENSATION COMMISSION
ANNUAL REPORT
July 1, 2022 to July 1, 2023

Case #	Victim Sex	Victim Age	Race/Ethnicity	Crime	Decision	Remarks	Total Award
22-0203	Female	47	Unknown	AA - Assault, Adult	Award		\$50.00
22-0205	Male	55	Japanese	AA - Assault, Adult	Award		\$100.00
22-0206	Female	20	Multiracial	SAA - Sexual Assault, Adult	Award		\$300.00
22-0208	Male	32	Unknown	ATMF - Attempted Murder by Family Member	Award		\$3,295.52
22-0209	Female	25	Unknown	HA - Homicide, Murder, Mans: Adult	Award		\$2,603.12
22-0211	Male	39	White/Caucasian (not Portugese)	AA - Assault, Adult	Award		\$200.00
22-0213	Female	23	Samoan	HA - Homicide, Murder, Mans; Adult	Denial	CS - Collateral Source	\$0.00
22-0216	Male	35	Unknown	AA - Assault, Adult	Award		\$84.01
22-0224	Female	22	Chinese	AA - Assault, Adult	Award		\$300.00
22-0225	Female	22	Chinese	AA - Assault, Adult	Award		\$200.00
22-0226	Female	22	Multiracial	AAF - Assault, Adult by Family Member	Award		\$100.00
22-0227	Male	27	Samoan	HA - Homicide, Murder, Mans; Adult	Award		\$7,000.00
22-0230	Female	5	Hawaiian	SACF - Sexual Assault, Child by Family	Award		\$400.00
22-0231	Female	11	Hawaiian	SACF - Sexual Assault, Child by Family	Award		\$400.00
22-0233	Female	66	Puerto Rican/Latino	AA - Assault, Adult	Denial	CS - Collateral Source	\$0.00
22-0235	Male	61	White/Caucasian (not Portugese)	AA - Assault, Adult	Award		\$50.00
22-0237	Female	45	Korean	AAF - Assault, Adult by Family Member	Denial	CS - Collateral Source	\$0.00
22-0238	Female	27	Hispanic	HAF - Homicide of Adult by Family Member	Award		\$7,000.00
22-0240	Female	36	Hispanic	HAF - Homicide of Adult by Family Member	Award		\$50.00
22-0243	Male	31	Multiracial	HAF - Homicide of Adult by Family Member	Award		\$50.00
22-0244	Male	44	White/Caucasian (not Portugese)	HAF - Homicide of Adult by Family Member	Award		\$50.00
22-0245	Female	27	Hispanic	HAF - Homicide of Adult by Family Member	Denial	DC - Duplicate Claim	\$0.00
22-0246	Female	40	Multiracial	AAF - Assault, Adult by Family Member	Award		\$400.00
22-0249	Male	51	Multiracial	AAF - Assault, Adult by Family Member	Award		\$150.00
22-0251	Female	38	American Indian / Alaska Native	AA - Assault, Adult	Denial	DC - Duplicate Claim	\$0.00
22-0255	Female	13	Multiracial	SAC - Sexual Assault, Child	Award		\$1,390.00
22-0257	Female	25	Multiracial	AA - Assault, Adult	Award		\$50.00
22-0258	Male	52	White/Caucasian (not Portugese)	AA - Assault, Adult	Award		\$70.00
22-0269	Male	51	Hawaiian	AA - Assault, Adult	Award		\$50.00
22-0270	Male	29	Hawaiian	AA - Assault, Adult	Award		\$50.00
22-0271	Female	75	Japanese	AA - Assault, Adult	Award		\$200.00

**STATE OF HAWAII
DEPARTMENT OF PUBLIC SAFETY
CRIME VICTIM COMPENSATION COMMISSION
ANNUAL REPORT
July 1, 2022 to July 1, 2023**

Case #	Victim Sex	Victim Age	Race/Ethnicity	Crime	Decision	Remarks	Total Award
22-0272	Female	28	Hawaiian	AA - Assault, Adult	Award		\$150.00
22-0273	Female	28	Hawaiian	AAF - Assault, Adult by Family Member	Award		\$150.00
22-0274	Female	50	Chinese	AAF - Assault, Adult by Family Member	Award		\$150.00
22-0275	Male	51	Filipino	AA - Assault, Adult	Award		\$1,063.35
22-0277	Female	32	Unknown	KID - Kidnapping TT - Terroristic Threatening	Award		\$400.00
22-0279	Female	10	White/Caucasian (not Portugese)	SACF - Sexual Assault, Child by Family	Denial	IC - Improper Claim	\$0.00
22-0280	Female	6	White/Caucasian (not Portugese)	SACF - Sexual Assault, Child by Family	Denial	IC - Improper Claim	\$0.00
22-0283	Female	34	Hawaiian	HAF - Homicide of Adult by Family Member	Award		\$50.00
22-0284	Female	24	Puerto Rican/Latino	HA - Homicide, Murder, Mans, Adult	Award		\$7,000.00
22-0286	Male	32	Multiracial	AAF - Assault, Adult by Family Member	Award		\$200.00
22-0287	Female	51	White/Caucasian (not Portugese)	HA - Homicide, Murder, Mans, Adult	Award		\$4,808.56
22-0288	Female	42	Multiracial	AAF - Assault, Adult by Family Member	Award		\$326.84
22-0290	Female	35	Hispanic	SAA - Sexual Assault, Adult	Award		\$7,410.00
22-0293	Female	39	Black/African American	AA - Assault, Adult	Denial	IC - Improper Claim	\$0.00
22-0295	Female	22	Multiracial	AAF - Assault, Adult by Family Member	Award		\$150.00
22-0297	Female	39	Multiracial	AAF - Assault, Adult by Family Member	Award		\$200.00
22-0298	Female	24	Other	SAA - Sexual Assault, Adult	Award		\$2,186.71
22-0299	Female	30	Black/African American	AA - Assault, Adult	Award		\$100.00
22-0302	Male	71	Chinese	AA - Assault, Adult	Award		\$250.00
22-0308	Female	21	Hawaiian	AAF - Assault, Adult by Family Member	Award		\$75.00
22-0309	Female	74	Other	AA - Assault, Adult	Award		\$250.00
22-0310	Female	28	Other	SAA - Sexual Assault, Adult	Denial	CS - Collateral Source	\$750.94
22-0313	Male	29	Hawaiian	AA - Assault, Adult	Award		\$2,355.40
22-0314	Female	25	White/Caucasian (not Portugese)	SAA - Sexual Assault, Adult	Award		\$200.00
22-0317	Female	58	Japanese	AA - Assault, Adult	Award		\$100.00
22-0318	Male	38	Filipino	AA - Assault, Adult	Award		\$1,389.97
22-0319	Male	11	Filipino	AC - Assault, Child	Award		\$401.58
22-0320	Female	52	Japanese	AA - Assault, Adult	Award		\$100.00
22-0325	Female	81	Filipino	AA - Assault, Adult	Award		\$333.47
22-0327	Male	78	Portugese	NCC - Not a Covered Crime	Denial	NCC - Not a Covered Case	\$0.00
22-0329	Female	24	Hawaiian	AAF - Assault, Adult by Family Member	Award		\$150.00

STATE OF HAWAII
DEPARTMENT OF PUBLIC SAFETY
CRIME VICTIM COMPENSATION COMMISSION
ANNUAL REPORT
July 1, 2022 to July 1, 2023

Case #	Victim Sex	Victim Age	Race/Ethnicity	Crime	Decision	Remarks	Total Award
22-0330	Female	64	Filipino	AA - Assault, Adult	Award	CTI - Contributory	\$0.00
22-0332	Female	32	Samoan	AAF - Assault, Adult by Family Member	Award		\$250.00
22-0333	Female	40	Hawaiian	AAF - Assault, Adult by Family Member	Award		\$400.00
22-0334	Female	40	Hawaiian	AAF - Assault, Adult by Family Member KID - Kidnapping	Denial	DC - Duplicate Claim	\$0.00
22-0335	Male	8	Hawaiian	ACF - Assault, Child by Family Member KID - Kidnapping	Denial	NPA - Not a Proper Applicant	\$0.00
22-0336	Male	26	Japanese	AAF - Assault, Adult by Family Member	Award		\$150.00
22-0337	Female	53	Filipino	AA - Assault, Adult	Award		\$50.00
22-0341	Female	51	Filipino	AAF - Assault, Adult by Family Member	Award		\$100.00
22-0343	Female	26	Multiracial	ATM - Attempted Murder	Award		\$350.00
22-0344	Male	17	Hawaiian	AC - Assault, Child	Award		\$100.00
22-0345	Female	24	White/Caucasian (not Portugese)	SAA - Sexual Assault, Adult	Award		\$200.00
22-0346	Female	38	Filipino	SAA - Sexual Assault, Adult	Award		\$200.00
22-0347	Female	18	Japanese	SAA - Sexual Assault, Adult	Denial	CS - Collateral Source	\$0.00
22-0349	Male	34	White/Caucasian (not Portugese)	NH2 - Negligent Homicide II	Denial	CS - Collateral Source	\$0.00
22-0350	Female	48	Hawaiian	AAF - Assault, Adult by Family Member	Award		\$100.00
22-0351	Female	48	Hawaiian	AAF - Assault, Adult by Family Member	Award		\$100.00
22-0352	Female	48	Hawaiian	AAF - Assault, Adult by Family Member	Award		\$100.00
22-0353	Female	32	White/Caucasian (not Portugese)	AAF - Assault, Adult by Family Member	Award		\$100.00
22-0354	Female	48	Multiracial	AA - Assault, Adult	Award		\$100.00
22-0356	Male	49	White/Caucasian (not Portugese)	AA - Assault, Adult	Award		\$50.00
22-0358	Female	29	Chinese	SAA - Sexual Assault, Adult	Award		\$300.00
22-0359	Female	58	Multiracial	AA - Assault, Adult	Award		\$50.00
22-0361	Female	16	Filipino	SAC - Sexual Assault, Child	Award		\$150.00
22-0365	Female	76	Filipino	HAF - Homicide of Adult by Family Member	Award		\$0.00
22-0367	Male	32	Other	HA - Homicide, Murder, Mans; Adult	Award		\$10,000.00
22-0373	Female	37	Hispanic	AA - Assault, Adult	Award		\$2,599.86
22-0376	Female	54	Multiracial	AA - Assault, Adult	Award		\$193.00
22-0377	Male	47	White/Caucasian (not Portugese)	AA - Assault, Adult	Award		\$100.00
22-0378	Female	7	Multiracial	SACF - Sexual Assault, Child by Family	Award		\$430.00
22-0380	Female	38	Korean	SAA - Sexual Assault, Adult	Award		\$50.00
22-0381	Male	53	Other	AA - Assault, Adult	Award		\$50.00

STATE OF HAWAII
DEPARTMENT OF PUBLIC SAFETY
CRIME VICTIM COMPENSATION COMMISSION
ANNUAL REPORT
July 1, 2022 to July 1, 2023

Case #	Victim Sex	Victim Age	Race/Ethnicity	Crime	Decision	Remarks	Total Award
22-0393	Male	67	Unknown	AA - Assault, Adult	Award		\$150.00
22-0394	Female	35	Hawaiian	SAA - Sexual Assault, Adult	Award		\$50.00
22-0396	Female	20	Hawaiian	AAF - Assault, Adult by Family Member	Award		\$250.00
22-0398	Female	42	White/Caucasian (not Portugese)	AAF - Assault, Adult by Family Member	Award		\$389.88
22-0400	Female	32	Multiracial	AAF - Assault, Adult by Family Member	Award		\$150.00
22-0401	Female	21	Hawaiian	AA - Assault, Adult	Denial	IC - Improper Claim	\$0.00
22-0402	Male	49	Unknown	AAF - Assault, Adult by Family Member	Award		\$9,184.32
22-0405	Male	60	Japanese	AA - Assault, Adult	Award		\$324.92
22-0408	Female	52	Hawaiian	AA - Assault, Adult	Award		\$50.00
22-0409	Female	47	Hispanic	AAF - Assault, Adult by Family Member	Award		\$100.00
22-0411	Female	25	Filipino	AAF - Assault, Adult by Family Member	Award		\$883.84
22-0418	Male	58	Japanese	AA - Assault, Adult	Award		\$100.00
22-0421	Female	52	Hawaiian	NCC - Not a Covered Crime	Denial	NCC - Not a Covered Case	\$0.00
22-0423	Female	31	Other	AAF - Assault, Adult by Family Member	Award		\$100.00
23-0008	Male	53	Korean	AA - Assault, Adult	Denial	CS - Collateral Source	\$0.00
23-0009	Male	53	Korean	NCC - Not a Covered Crime	Denial	NCC - Not a Covered Case	\$0.00
23-0011	Male	57	White/Caucasian (not Portugese)	HA - Homicide, Murder, Mans. Adult	Denial	CS - Collateral Source	\$0.00
23-0013	Female	27	Multiracial	AA - Assault, Adult	Denial	CS - Collateral Source	\$0.00
23-0014	Female	50	Hawaiian	AA - Assault, Adult	Award		\$50.00
23-0015	Male	53	Japanese	AA - Assault, Adult	Award		\$50.00
23-0021	Female	67	Japanese	AAF - Assault, Adult by Family Member	Award		\$200.00
23-0026	Female	49	Filipino	AA - Assault, Adult	Denial	CS - Collateral Source	\$0.00
23-0029	Male	32	Multiracial	AAF - Assault, Adult by Family Member	Denial	IC - Improper Claim	\$0.00
23-0030	Male	70	Chinese	AA - Assault, Adult	Award		\$150.00
23-0032	Male	22	Multiracial	AA - Assault, Adult	Award		\$50.00
23-0033	Male	60	Black/African American	AA - Assault, Adult	Award		\$50.00
23-0034	Female	37	Multiracial	AAF - Assault, Adult by Family Member	Award		\$100.00
23-0035	Male	14	Hawaiian	KID - Kidnapping	Denial	IC - Improper Claim	\$0.00
23-0047	Male	62	American Indian / Alaska Native	AA - Assault, Adult	Denial	INM - Inmate	\$0.00
23-0053	Female	37	Hawaiian	TT - Terroristic Threatening	Denial	NCC - Not a Covered Case	\$0.00
23-0054	Male	60	Unknown	AA - Assault, Adult	Award		\$100.00

STATE OF HAWAII
DEPARTMENT OF PUBLIC SAFETY
CRIME VICTIM COMPENSATION COMMISSION
ANNUAL REPORT
July 1, 2022 to July 1, 2023

Case #	Victim Sex	Victim Age	Race/Ethnicity	Crime	Decision	Remarks	Total Award
23-0055	Male	60	Korean	AA - Assault, Adult	Award		\$466.54
23-0057	Male	58	Japanese	AA - Assault, Adult	Award		\$50.00
23-0059	Female	13	Chinese	SAC - Sexual Assault, Child	Award		\$350.00
23-0061	Male	68	Japanese	AA - Assault, Adult	Denial		\$8,031.50
23-0065	Female	41	Unknown	SAA - Sexual Assault, Adult	Award		\$50.00
23-0070	Male	43	Multiracial	AA - Assault, Adult	Award		\$50.00
23-0075	Female	46	Filipino	AA - Assault, Adult	Award		\$250.00
23-0077	Female	16	Multiracial	NH1 - Negligent Homicide I, DUI	Denial	CS - Collateral Source	\$0.00
23-0078	Male	14	Samoan	AC - Assault, Child	Award		\$768.27
23-0079	Female	71	Chinese	AA - Assault, Adult	Award		\$727.59
23-0080	Female	16	Unknown	AC - Assault, Child	Award		\$100.00
23-0081	Male	49	Multiracial	AA - Assault, Adult	Award		\$50.00
23-0082	Female	50	Multiracial	AA - Assault, Adult	Award		\$70.54
23-0083	Female	54	Chinese	AAF - Assault, Adult by Family Member	Award		\$100.00
23-0088	Male	11	Japanese	AC - Assault, Child	Award		\$100.00
23-0090	Female	66	Hispanic	AA - Assault, Adult	Award		\$150.00
23-0093	Female	31	Unknown	AAF - Assault, Adult by Family Member	Award		\$100.00
23-0094	Female	41	Filipino	AA - Assault, Adult	Award		\$5,486.53
23-0096	Male	68	Japanese	AA - Assault, Adult	Denial	DC - Duplicate Claim	\$0.00
23-0097	Male	37	American Indian / Alaska Native	NCC - Not a Covered Crime	Denial	NCC - Not a Covered Case	\$0.00
23-0101	Male	68	American Indian / Alaska Native	AA - Assault, Adult	Denial	CS - Collateral Source	\$0.00
23-0104	Male	22	Filipino	ATM - Attempted Murder	Award		\$200.00
23-0105	Male	29	White/Caucasian (not Portugese)	AA - Assault, Adult	Award		\$10,000.00
23-0106	Female	60	White/Caucasian (not Portugese)	AAF - Assault, Adult by Family Member	Award		\$100.00
23-0108	Female	27	Multiracial	AAF - Assault, Adult by Family Member	Award		\$100.00
23-0109	Male	28	Black/African American	AA - Assault, Adult	Award		\$9,444.30
23-0110	Female	30	Unknown	AAF - Assault, Adult by Family Member	Award		\$150.00
23-0111	Female	30	Unknown	AAF - Assault, Adult by Family Member	Award		\$100.00
23-0112	Female	30	Unknown	NCC - Not a Covered Crime	Denial	NCC - Not a Covered Case	\$0.00
23-0113	Female	30	Unknown	AAF - Assault, Adult by Family Member	Award		\$150.00
23-0114	Female	31	Unknown	AAF - Assault, Adult by Family Member	Award		\$100.00

STATE OF HAWAII
DEPARTMENT OF PUBLIC SAFETY
CRIME VICTIM COMPENSATION COMMISSION
ANNUAL REPORT
July 1, 2022 to July 1, 2023

Case #	Victim Sex	Victim Age	Race/Ethnicity	Crime	Decision	Remarks	Total Award
23-0115	Female	31	Unknown	AAF - Assault, Adult by Family Member	Award		\$100.00
23-0116	Female	31	Unknown	AAF - Assault, Adult by Family Member	Award		\$100.00
23-0117	Female	31	Unknown	AAF - Assault, Adult by Family Member	Award		\$100.00
23-0118	Female	31	Unknown	AAF - Assault, Adult by Family Member	Award		\$150.00
23-0119	Male	50	Unknown	AA - Assault, Adult	Denial	CS - Collateral Source	\$0.00
23-0122	Female	52	Filipino	AAF - Assault, Adult by Family Member	Award		\$150.00
23-0123	Female	61	Japanese	AAF - Assault, Adult by Family Member	Award		\$150.00
23-0128	Male	49	Unknown	N12 - Negligent Injury II	Denial	CS - Collateral Source	\$0.00
23-0129	Male	21	Guamanian/Pacific Islander	HA - Homicide, Murder, Mans; Adult	Award		\$7,000.00
23-0130	Male	64	Hawaiian	AA - Assault, Adult	Award		\$530.14
23-0131	Female	26	Other	AA - Assault, Adult	Award		\$394.22
23-0132	Female	36	Other	AA - Assault, Adult	Award		\$250.00
23-0133	Female	23	Filipino	SAAF - Sexual Assault, Adult by Family	Award		\$100.00
23-0134	Male	37	American Indian / Alaska Native	TT - Terroristic Threatening	Denial	NCC - Not a Covered Case	\$0.00
23-0135	Female	41	Other	NCC - Not a Covered Crime	Denial	NCC - Not a Covered Case	\$0.00
23-0136	Female	41	Other	NCC - Not a Covered Crime	Denial	NCC - Not a Covered Case	\$0.00
23-0137	Female	41	Other	NCC - Not a Covered Crime	Denial	NCC - Not a Covered Case	\$0.00
23-0143	Male	33	White/Caucasian (not Portugese)	AA - Assault, Adult	Award		\$1,561.96
23-0147	Male	63	Other	AA - Assault, Adult	Award		\$250.00
23-0149	Male	28	Multiracial	AA - Assault, Adult	Award		\$50.00
23-0153	Female	41	Filipino	AAF - Assault, Adult by Family Member	Award		\$100.00
23-0154	Female	15	Filipino	AC - Assault, Child	Award		\$100.00
23-0160	Male	38	Portugese	ATM - Attempted Murder	Award		\$2,345.80
23-0165	Female	41	Filipino	AAF - Assault, Adult by Family Member	Award		\$100.00
23-0166	Female	40	Filipino	AAF - Assault, Adult by Family Member	Award		\$150.00
23-0167	Female	40	Filipino	AAF - Assault, Adult by Family Member	Award		\$100.00
23-0168	Female	40	Filipino	AAF - Assault, Adult by Family Member	Award		\$100.00
23-0170	Female	41	Filipino	AAF - Assault, Adult by Family Member	Award		\$150.00
23-0171	Female	41	Filipino	AAF - Assault, Adult by Family Member	Award		\$100.00
23-0172	Female	41	Filipino	AAF - Assault, Adult by Family Member	Award		\$200.00
23-0173	Female	38	White/Caucasian (not Portugese)	AAF - Assault, Adult by Family Member	Award		\$6,733.47

STATE OF HAWAII
DEPARTMENT OF PUBLIC SAFETY
CRIME VICTIM COMPENSATION COMMISSION
ANNUAL REPORT
July 1, 2022 to July 1, 2023

Case #	Victim Sex	Victim Age	Race/Ethnicity (Portugese)	Crime	Decision	Remarks	Total Award	
23-0175	Female	23	Filipino	SAAF - Sexual Assault, Adult by Family	Award		\$100.00	
23-0178	Female	9	White/Caucasian (not Portugese)	SACF - Sexual Assault, Child by Family	Award		\$400.00	
23-0179	Male	6	Other	SACF - Sexual Assault, Child by Family	Award		\$400.00	
23-0191	Female	26	White/Caucasian (not Portugese)	NCC - Not a Covered Crime	Denial	NCC - Not a Covered Case	\$0.00	
23-0192	Male	24	Hawaiian	NCC - Not a Covered Crime	Denial	NCC - Not a Covered Case	\$0.00	
23-0196	Female	13	Chinese	SAC - Sexual Assault, Child	Award		\$150.00	
23-0197	Female	13	Chinese	SAC - Sexual Assault, Child	Award		\$100.00	
23-0198	Female	13	Chinese	SAC - Sexual Assault, Child	Award		\$100.00	
23-0199	Female	13	Chinese	SAC - Sexual Assault, Child	Award		\$100.00	
23-0207	Male	36	Multiracial	AA - Assault, Adult	Award		\$436.15	
Kauai - Kauai	19-0288	Female	14	Multiracial	AC - Assault, Child	Award	\$100.00	
	20-0208	Female	43	White/Caucasian (not Portugese)	AAF - Assault, Adult by Family Member	Award	\$75.00	
	20-0502	Male	62	Hawaiian	AA - Assault, Adult	Award	\$100.00	
	20-0540	Female	21	Hawaiian	AA - Assault, Adult	Award	\$25.00	
	21-0020	Male	31	Hispanic	AA - Assault, Adult	Award	\$150.00	
	21-0095	Female	16	Hawaiian	SAC - Sexual Assault, Child	Award	\$700.00	
	21-0107	Male	8	Multiracial	ACF - Assault, Child by Family Member	Award	\$75.00	
	21-0111	Female	47	White/Caucasian (not Portugese)	NI2 - Negligent Injury II	Denial	CS - Collateral Source	\$0.00
	21-0114	Female	46	Other	AAF - Assault, Adult by Family Member	Denial	BFP - Beyond Filing Period	\$0.00
	21-0168	Female	17	Filipino	SACF - Sexual Assault, Child by Family	Award	\$75.00	
	21-0172	Female	54	American Indian / Alaska Native	AAF - Assault, Adult by Family Member	Denial	CS - Collateral Source	\$0.00
	21-0184	Female	52	Portugese	AA - Assault, Adult	Award	\$89.36	
	21-0188	Female	35	White/Caucasian (not Portugese)	AAF - Assault, Adult by Family Member	Award	\$75.00	
	21-0246	Male	47	White/Caucasian (not Portugese)	AA - Assault, Adult	Award	\$75.00	
	21-0270	Female	9	Unknown	SAC - Sexual Assault, Child	Denial	IC - Improper Claim	\$0.00
	21-0427	Female	35	Multiracial	AA - Assault, Adult	Denial	CS - Collateral Source	\$0.00
	22-0052	Male	54	White/Caucasian (not Portugese)	AA - Assault, Adult	Denial	CS - Collateral Source	\$0.00
	22-0112	Male	52	Hawaiian	AA - Assault, Adult	Award	\$1,154.40	
	22-0122	Female	47	American Indian / Alaska Native	AA - Assault, Adult	Denial	IC - Improper Claim	\$0.00
	22-0143	Female	12	Hawaiian	SAC - Sexual Assault, Child	Award	\$1,889.75	
	22-0200	Male	53	Multiracial	NI2 - Negligent Injury II	Denial	CS - Collateral Source	\$0.00

STATE OF HAWAII
DEPARTMENT OF PUBLIC SAFETY
CRIME VICTIM COMPENSATION COMMISSION
ANNUAL REPORT
July 1, 2022 to July 1, 2023

Case #	Victim Sex	Victim Age	Race/Ethnicity	Crime	Decision	Remarks	Total Award	
22-0207	Female	31	White/Caucasian (not Portugese)	NCC - Not a Covered Crime	Denial	NCC - Not a Covered Case	\$0.00	
22-0281	Male	63	White/Caucasian (not Portugese)	AA - Assault, Adult	Award		\$154.00	
22-0282	Male	16	Multiracial	AC - Assault, Child	Award		\$100.00	
22-0289	Female	54	American Indian / Alaska Native	AAF - Assault, Adult by Family Member	Denial	CS - Collateral Source	\$0.00	
22-0342	Male	68	Filipino	AA - Assault, Adult	Award		\$10,000.00	
22-0348	Female	43	White/Caucasian (not Portugese)	AAF - Assault, Adult by Family Member	Award		\$1,035.00	
22-0360	Male	66	Hispanic	AAF - Assault, Adult by Family Member	Award		\$150.00	
22-0404	Male	30	White/Caucasian (not Portugese)	AA - Assault, Adult	Award		\$50.00	
23-0010	Male	10	Other	AC - Assault, Child	Award		\$1,035.64	
23-0024	Female	45	White/Caucasian (not Portugese)	AAF - Assault, Adult by Family Member	Denial	CS - Collateral Source	\$0.00	
23-0025	Male	0	White/Caucasian (not Portugese)	NCC - Not a Covered Crime	Denial	NCC - Not a Covered Case	\$0.00	
23-0038	Female	31	White/Caucasian (not Portugese)	NCC - Not a Covered Crime	Denial	NCC - Not a Covered Case	\$0.00	
23-0039	Female	31	White/Caucasian (not Portugese)	NCC - Not a Covered Crime	Denial	NCC - Not a Covered Case	\$0.00	
23-0040	Female	31	White/Caucasian (not Portugese)	NCC - Not a Covered Crime	Denial	NCC - Not a Covered Case	\$0.00	
23-0041	Female	31	White/Caucasian (not Portugese)	NCC - Not a Covered Crime	Denial	NCC - Not a Covered Case	\$0.00	
23-0043	Female	31	White/Caucasian (not Portugese)	NCC - Not a Covered Crime	Denial	NCC - Not a Covered Case	\$0.00	
23-0044	Female	32	White/Caucasian (not Portugese)	NCC - Not a Covered Crime	Denial	NCC - Not a Covered Case	\$0.00	
23-0052	Female	43	Filipino	AAF - Assault, Adult by Family Member	Award		\$100.00	
23-0095	Male	44	Multiracial	NI - Negligent Injury I	Denial	CS - Collateral Source	\$0.00	
Maui - Lanai	21-0170	Female	14	Hawaiian	SAC - Sexual Assault, Child	Award	\$200.00	
	23-0181	Female	32	Filipino	AA - Assault, Adult	Award	\$150.00	
Maui - Maui	19-0001	Female	16	Hawaiian	SAC - Sexual Assault, Child	Denial	NPA - Not a Proper Applicant	\$0.00
	19-0717	Male	44	Samoan	AA - Assault, Adult	Award	\$200.00	
	20-0085	Female	8	Filipino	SAC - Sexual Assault, Child	Award	\$200.00	
	20-0087	Female	14	Multiracial	SAC - Sexual Assault, Child	Award	\$400.00	
	20-0088	Female	9	Hawaiian	SACF - Sexual Assault, Child by Family	Award	\$400.00	
	20-0192	Female	15	White/Caucasian (not Portugese)	SAC - Sexual Assault, Child	Award	\$150.00	
	20-0248	Female	46	Other	ATMF - Attempted Murder by Family Member	Award	\$469.85	
	20-0250	Female	17	Hawaiian	AC - Assault, Child	Award	\$50.00	
	20-0251	Female	12	Portugese	SAC - Sexual Assault, Child	Award	\$200.00	
	20-0275	Female	9	Multiracial	SAC - Sexual Assault, Child	Award	\$200.00	

STATE OF HAWAII
DEPARTMENT OF PUBLIC SAFETY
CRIME VICTIM COMPENSATION COMMISSION
ANNUAL REPORT
July 1, 2022 to July 1, 2023

Case #	Victim Sex	Victim Age	Race/Ethnicity	Crime	Decision	Remarks	Total Award
20-0316	Male	48	Filipino	AA - Assault, Adult	Award		\$260.00
20-0371	Female	15	White/Caucasian (not Portugese)	SAC - Sexual Assault, Child	Award		\$75.00
20-0410	Male	45	Korean	AA - Assault, Adult	Award		\$1,723.00
20-0414	Female	56	Other	AAF - Assault, Adult by Family Member	Award		\$4,924.60
20-0456	Female	10	Portugese	SACF - Sexual Assault, Child by Family	Award		\$100.00
20-0458	Female	18	Other	AA - Assault, Adult	Award		\$576.63
20-0469	Female	13	Hispanic	SAC - Sexual Assault, Child	Award		\$200.00
20-0495	Female	38	Hawaiian	SAA - Sexual Assault, Adult	Award		\$150.00
20-0520	Female	13	Hawaiian	SACF - Sexual Assault, Child by Family	Award		\$200.00
20-0535	Male	27	White/Caucasian (not Portugese)	AA - Assault, Adult	Award		\$75.00
21-0054	Female	36	White/Caucasian (not Portugese)	AAF - Assault, Adult by Family Member	Award		\$50.00
21-0058	Male	54	White/Caucasian (not Portugese)	AA - Assault, Adult	Denial	CS - Collateral Source	\$0.00
21-0151	Female	14	Hawaiian	SACF - Sexual Assault, Child by Family	Award		\$210.00
21-0173	Female	44	Filipino	SAA - Sexual Assault, Adult	Award		\$150.00
21-0237	Female	15	Other	SACF - Sexual Assault, Child by Family	Award		\$100.00
21-0238	Female	17	Other	SACF - Sexual Assault, Child by Family	Award		\$100.00
21-0244	Male	46	White/Caucasian (not Portugese)	AA - Assault, Adult	Award		\$386.73
21-0245	Female	41	Unknown	AAF - Assault, Adult by Family Member	Denial	CS - Collateral Source	\$0.00
21-0373	Male	45	Multiracial	AA - Assault, Adult	Award		\$100.00
21-0374	Male	44	Multiracial	AA - Assault, Adult	Denial	IC - Improper Claim	\$0.00
21-0423	Male	10	White/Caucasian (not Portugese)	AC - Assault, Child	Award		\$247.27
22-0008	Male	41	White/Caucasian (not Portugese)	AA - Assault, Adult	Award		\$50.00
22-0055	Male	64	White/Caucasian (not Portugese)	AA - Assault, Adult	Award		\$125.00
22-0070	Male	73	White/Caucasian (not Portugese)	AA - Assault, Adult	Award		\$100.00
22-0071	Male	73	White/Caucasian (not Portugese)	AA - Assault, Adult	Award		\$100.00
22-0072	Female	14	Filipino	SAC - Sexual Assault, Child	Award		\$200.00
22-0073	Female	14	Hawaiian	SAC - Sexual Assault, Child	Award		\$175.00
22-0099	Female	35	Filipino	AAF - Assault, Adult by Family Member	Award		\$50.00
22-0111	Female	13	Multiracial	SACF - Sexual Assault, Child by Family	Award		\$200.00
22-0144	Female	24	Hispanic	SAAF - Sexual Assault, Adult by Family	Award		\$2,646.22
22-0166	Male	64	White/Caucasian (not Portugese)	NCC - Not a Covered Crime	Denial	NCC - Not a Covered Case	\$0.00

STATE OF HAWAII
DEPARTMENT OF PUBLIC SAFETY
CRIME VICTIM COMPENSATION COMMISSION
ANNUAL REPORT
July 1, 2022 to July 1, 2023

Case #	Victim Sex	Victim Age	Race/Ethnicity (Portugese)	Crime	Decision	Remarks	Total Award
22-0167	Female		56 White/Caucasian (not Portugese)	Motor Vehicle Accident	Denial	IC - Improper Claim	\$0.00
22-0177	Female		26 White/Caucasian (not Portugese)	SAA - Sexual Assault, Adult	Award		\$100.00
22-0197	Female		6 Hawaiian	SACF - Sexual Assault, Child by Family	Award		\$200.00
22-0204	Male		17 Hawaiian	NH1 - Negligent Homicide I, DUI	Denial	CS - Collateral Source	\$0.00
22-0232	Female		18 Multiracial	AAF - Assault, Adult by Family Member	Award		\$250.00
22-0262	Female		24 Puerto Rican/Latino	NH2 - Negligent Homicide II	Denial	IC - Improper Claim	\$0.00
22-0268	Male		55 White/Caucasian (not Portugese)	NCC - Not a Covered Crime	Denial	NCC - Not a Covered Case	\$0.00
22-0285	Male		74 Filipino	AA - Assault, Adult	Award		\$150.00
22-0291	Female		15 Hispanic	SACF - Sexual Assault, Child by Family	Award		\$1,953.17
22-0294	Female		28 Multiracial	AAF - Assault, Adult by Family Member	Award		\$200.00
22-0311	Male		43 White/Caucasian (not Portugese)	AAF - Assault, Adult by Family Member TT - Terroristic Threatening	Award		\$300.00
22-0324	Female		35 Unknown	AAF - Assault, Adult by Family Member	Award		\$150.00
22-0331	Female		43 Other	AAF - Assault, Adult by Family Member	Award		\$200.00
22-0355	Male		37 Hawaiian	AA - Assault, Adult	Award		\$100.00
22-0357	Male		54 White/Caucasian (not Portugese)	HA - Homicide, Murder, Mans; Adult	Award		\$1,699.96
22-0362	Male		37 Hawaiian	AA - Assault, Adult	Denial	DC - Duplicate Claim	\$0.00
22-0363	Female		40 White/Caucasian (not Portugese)	NCC - Not a Covered Crime	Denial	NCC - Not a Covered Case	\$0.00
22-0364	Female		40 White/Caucasian (not Portugese)	NCC - Not a Covered Crime	Denial	NCC - Not a Covered Case	\$0.00
22-0382	Female		56 Black/African American	AA - Assault, Adult	Denial	CS - Collateral Source	\$0.00
22-0390	Female		23 White/Caucasian (not Portugese)	SAA - Sexual Assault, Adult	Denial	CS - Collateral Source	\$0.00
22-0391	Female		32 Multiracial	AAF - Assault, Adult by Family Member	Award		\$150.00
22-0395	Male		33 Multiracial	AA - Assault, Adult	Denial	CS - Collateral Source	\$0.00
22-0397	Male		54 White/Caucasian (not Portugese)	AA - Assault, Adult	Denial	CS - Collateral Source	\$0.00
22-0406	Female		43 White/Caucasian (not Portugese)	AAF - Assault, Adult by Family Member	Denial	CS - Collateral Source	\$0.00
22-0407	Female		70 White/Caucasian (not Portugese)	AA - Assault, Adult	Award		\$4,174.85
22-0410	Female		50 White/Caucasian (not Portugese)	AA - Assault, Adult	Award		\$1,356.33
22-0413	Female		14 Other	SAC - Sexual Assault, Child	Denial	NPA - Not a Proper Applicant	\$0.00
22-0416	Female		4 Filipino	SACF - Sexual Assault, Child by Family	Award		\$400.00
23-0017	Male		75 Multiracial	AAF - Assault, Adult by Family Member	Award		\$200.00
23-0023	Male		62 Hawaiian	AA - Assault, Adult	Award		\$564.58
23-0027	Male		43 White/Caucasian (not Portugese)	NCC - Not a Covered Crime	Denial	NCC - Not a Covered Case	\$0.00

STATE OF HAWAII
DEPARTMENT OF PUBLIC SAFETY
CRIME VICTIM COMPENSATION COMMISSION
ANNUAL REPORT
July 1, 2022 to July 1, 2023

Case #	Victim Sex	Victim Age	Race/Ethnicity (Portugese)	Crime	Decision	Remarks	Total Award
23-0028	Male		43 White/Caucasian (not Portugese)	AAF - Assault, Adult by Family Member	Denial	IC - Improper Claim	\$0.00
23-0036	Female		12 White/Caucasian (not Portugese)	SAC - Sexual Assault, Child	Award		\$400.00
23-0037	Male		13 Unknown	SACF - Sexual Assault, Child by Family	Award		\$862.39
23-0046	Female		70 Filipino	AA - Assault, Adult	Award		\$150.00
23-0050	Female		41 Unknown	NCC - Not a Covered Crime	Denial	NCC - Not a Covered Case	\$0.00
23-0072	Male		43 White/Caucasian (not Portugese)	NCC - Not a Covered Crime	Denial	NCC - Not a Covered Case	\$150.00
23-0073	Male		43 White/Caucasian (not Portugese)	AAF - Assault, Adult by Family Member	Award		\$150.00
23-0089	Female		36 White/Caucasian (not Portugese)	SAA - Sexual Assault, Adult	Award		\$300.00
23-0091	Female		56 White/Caucasian (not Portugese)	AA - Assault, Adult	Award		\$100.00
23-0103	Female		27 Hawaiian	AAF - Assault, Adult by Family Member	Award		\$200.00
23-0127	Female		28 Multiracial	AA - Assault, Adult	Award		\$1,556.60
23-0146	Female		52 White/Caucasian (not Portugese)	NH1 - Negligent Homicide I, DUI	Denial	CS - Collateral Source	\$0.00
23-0193	Female		36 Hispanic	AAF - Assault, Adult by Family Member	Award		\$100.00
23-0203	Male		30 Other	AA - Assault, Adult	Denial	CS - Collateral Source	\$0.00
Maui - Molokai 22-0383	Male		36 White/Caucasian (not Portugese)	AA - Assault, Adult	Award		\$2,667.11